



**Ōraka Aparima Rūnaka Inc.**

# **Annual Report**

**July 2015—June 2016**



**Front cover:** “He Tangiwai” ~ carefully placed in the waters overlooking a spectacular Fiordland waterfall during the O-Hūpōkeka Haerenga in April 2016.



A stunning piece of tangiwai pounamu, prized for its translucent beauty.



Helicopter landing at Anita Bay, Fiordland.

# Contents Page:

Ōraka Aparima Rūnaka Aims and Objectives	4
2015 Annual General Hui minutes	5
Your Executive Kōmiti	10
Portfolio Holders Reports	11
Kaiwhakahaere—Sandra Cook Annual Report	12
Riki Dallas	14
Stewart Bull	15
Rangimāria Suddaby	17
Jane Kitson	18
Ann Wakefield	19
Shona Fordyce	21
Muriel Johnstone	22
Betty Rickus	24
Tane Davis	27
Dougal Austin	30
Tracey Wright-Tāwha	31
Our year 2015-2016	33
Thank you to our sponsors	36
Grants and Scholarships	37
Ā tātou tangata, ā tātou wāhi (Our people, our places)	38
Financial Reports	41



### Aims and Objectives:

- To provide for the well-being of Ngāi Tahu Whānui within our area with administrative assistance, guidance and management in Spiritual, Cultural, Educational, Moral, and Social and Economic aspects of life.
- To work as Kaitiaki (Guardians) with dedication in the field of Resource Management so that present and future Ngāi Tahu and all New Zealanders are assured a clean sustainable managed environment in which to live.
- To uplift and support Ngāi Tahu as Mana Whenua and to accept our host responsibilities by offering Manaakitanga where appropriate to other Ngāi Tahu, Māori individuals and groups living within or visiting our region.
- To develop our Marae Complex so all the above can be carried out – where we may pray, rise tall in oratory, weep for our dead, sing and dance, hold meetings, and house our guests etc. To know that here we belong and have a right to be heard and that this is the standing place of our present generation and will be the standing place for generations to come.
- We offer Information and Advice services from our Riverton Office/Resource Base – which is accessible to all in the community.
- We have instigated 'Whānau Development' Days / Hui and Wānanga in Riverton and Colac Bay.
- We awahi young and old and often include Iwi from other areas.
- We encourage the wider community to participate – offering Cultural experiences through Art and Theatre, Concert, Kai and Marae visits.
- We continue to work in the demanding roles of Resource Management and the management of Customary Fisheries – working with local groups, councils, local and government bodies etc.
- We are endeavouring to meet the many needs of Ngāi Tahu Whānui, plus the many others, who constantly seek our input, help and advice.

### ***Ōraka-Aparima Rūnaka Inc.***

***will endeavour to provide for the continuing growth  
of the cultural, spiritual, social and economic well-being of  
Ngāi Tahu Whānui within our rohe in an environment of excellence.***





# ŌRAKA APARIMA RŪNAKA INC.

Annual General Meeting held

Sunday 11th October, 2015

Takutai o Te Titi Marae, Oraka - Colac Bay.

**Mihimihi /  
Karakia:**

A mihi to all members by our Kaiwhakahaere – Sandra Cook, which was followed with a karakia timatanga.

**Present:**

1. Sandra Cook
2. Rangimaria Suddaby
3. Jane Kitson and son
4. Sue Crengle
5. Ann Wakefield
6. Muriel Johnstone
7. Betty Rickus
8. Shona Fordyce
9. Jane Davis
10. Joan Thomas
11. Terry Nicolas
12. Lynn West
13. Ron Bull senior
14. Ron Bull junior
15. Karina Davis-Marsden
16. Joan Fluerty
17. Phil Fluerty
18. Alex Taurima
19. Teina Wilmshurst
20. Vanessa Wilmshurst
21. Tracey Wright Tawha
22. Joe Wakefield
23. Gary Davis
24. Dave Taylor
25. Vera Gleeson
26. Tāne Davis
27. Hikatea Bull
28. Kyle Davis
29. Riki Dallas
30. Lynley McKay

**Apologies:**

1. Stewart Bull
2. Dene Cole
3. Robert Tait
4. Charlene McLenaghan
5. Rewi Davis
6. Ellen Pe'a
7. Wendy Dallas-Katoa
8. Stuart Ogilvy

**Maumahara:**

Members stood out of respect and remembrance for those who have passed away in the past year.

- Confirmation of Minutes:**
- **Motion 1**  
**Moved by Sandra Cook :** that the minutes of the previous Annual General Meeting held 12 October 2014 are a true and accurate record of proceedings with two amendments.  
**Seconded by Shona Fordyce**  
**Carried**
  - **Motion 2**  
**Moved by Sandra Cook:** that the minutes of the Triannual Meeting held on 16 November 2014 are a true and accurate record of proceedings.  
**Seconded by Hikatea Bull**  
**Carried**
- Amendments:**
- I. Typing error of Karina’s name has been amended.
  - II. Tracey Wright-Tawha was present at the A.G.M hui in October which has been amended.
- Matters Arising:**
1. Page 7—First minutes (October) regarding funding of Ōraka Aparima Rūnaka office. Terry Nicolas asked for clarification of why we don’t receive funding for our office e.g. the upgrade? The reply was that our office isn’t on or connected to the marae so therefore, we don’t meet the criteria. It didn’t seem right to Terry.
- Annual Report:**
2. **Chairperson Report**  
Taken as read from the Draft Annual Report presented.
    - a) With the change in Chairmanship at the Triannuals last year, it was discussed how Stewart Bull and Sandra Cook both had great skills and how good it would be if they could bring those skills together and work in conjunction. Sandra feels this is already happening. The Executive are restricting our roles and leaning more towards governance, building a strength focused rūnaka. e.g. whānau taking on more roles with projects rather than management.
    - b) We have more staff in the office – re: Riki’s appointment and Jacqui. Congratulations to all staff on the work that has been put out in the past year. Joe Wakefield, your contribution and the work you have done for the runaka has been outstanding and it is greatly appreciated. The whale kaupapa alone was huge, so a special thanks to you Joe and also to the people who supported you - Ann and Muriel.
    - c) Kapa Haka and Waka Ama are continuing to do really well and are performing well. Thank you to the organisers for the hard work and dedication put in during the year.
    - d) Our wahine are coming together again in the near future and will continue to have an input into the running of the Marae as our men do in their capacity.
    - e) Kāhui Kaumātua is still in it’s infancy but it is coming together really well. You are taking on a great role and we appreciate the mahi you are doing. Everything is falling into place nicely. Bring on the next year.
    - f) Joe Wakefield congratulated the rūnaka and whānau for upholding the mana of the marae and rūnaka. As a collective, we have all done extremely well and made this a successful year.
- Treasurer’s Report:**
3. **Annual Financial Report was adopted by the Directors via email in August**
    - a) Please show expenditure and income in different graphs
    - b) From this financial year, we are in a healthy position and in profit. New staff means more costs but we are getting more income through putea whakamahi.
    - c) Te Koawa Turoa o Takitimu is a big cost for us but we are ticking along.
    - d) Unspent grants are still there but are being sorted out. Good work everyone for helping to progress this and completing the mahi.

**Treasurer's  
Report:**

- e) **To be noted:**  
The Chair of the Ōraka Aparima Rūnaka Holdings Ltd.—Ron Bull, gave a report for the year.
- f) The Holdings Company continues to progress within the mandate the shareholders have given and the pūtea has been invested conservatively.
- g) Ōraka Aparima Rūnaka has offered to buy the Cleddau Street property from the Holdings which makes sense to have all our rentals in the same portfolio. This will change cash flow for both the Rūnaka and the Holdings which will result in more pūtea for distribution from the Holdings for charitable purposes. It will be good to get Cleddau Street sorted and passed over to the Rūnaka.
- h) We have been struggling for some time to try and wind up the Wild Kiwi but thanks to the hard work and dedication by the Directors. This is well under way and nearing completion.
- i) We are very focused on increasing our priorities and capacity but need to be able to meet the criteria when this happens and meet our obligations.
- j) We are currently in a state of crisis – personality wise, and need clarification on what our responsibilities are. Your directors have been here for some time now but there hasn't been a lot of direction from the shareholders which has caused a lot of uncertainty. Laurie Cameron has resigned and Geraldine Brockman's role is coming to an end, which will leave Ron and Jane on the board.
- k) Ron feels he is wasting his time coming down for meetings or discussions when in actual fact, if all they are doing is reinvesting the pūtea in term deposits, it can be done by the press of a button from home. As directors we are all seeking clarification on what direction the shareholder wishes for us to take and what mandate is required.

**Sandra responded:**

*"Yes Ron, you are right in some instances. There is a Letter of Expectation in the pipeline stating what is required of our Directors which will of course, go before the membership first before being passed on to the Holdings. We are hoping to look and make changes regarding bank deposits, because we would like a better return than what we are currently receiving. So yes, we will be expecting you to invest in a better portfolio which the Directors will then bring back to the shareholders."*

- l) JB Weir Investments were successful in investing on behalf of Moeraki. It could be something that we look at but it is all up in the air at the moment. Te Rūnaka o Ngāi Tahu can also offer good returns on investments but, it is a question of morals in regards to investing with them at this stage.
- m) The Holdings Constitution is being realigned with our Ōraka Aparima's Constitution which states that we require 3-7 Directors. The Office has been supporting the Holdings Company which has worked out well.
- Accounts have been approved by the Holdings Directors which now gives us our Consolidated Financial accounts that currently has over \$3,000,000 with the equity of both Ōraka Aparima Rūnaka and the Holdings Company. This is a great achievement as we are still accumulating funds while working and spending. It is important to use our funds rather than just put it in the bank and watch it grow. We are here for the people.
- n) Thank you to the Directors, including Laurie who tendered his resignation and to Geraldine who has been on loan from Te Rūnanga o Ngāi Tahu. We are doing our best to get on track to give you more direction.
- o) Financials for the Holdings Company are included in the Annual Report.

- p) Tracey Wright-Tawha congratulated everyone on all that they have done and reported back to members etc.

**Moved by Jane Kitson** that the Annual Financial report be adopted and that these financial documents be accepted as a true and accurate report.

**Seconded by Tracey Wright-Tawha**

**Carried**

**Appointment of Auditor: 4. Moved by Sandra Cook** that we reappoint Janet Horrell as our auditor.

**Seconded by Hikatea Bull**

**Carried**

**Action 1:** Send a note of thanks to the accountants and auditor as their work is very much appreciated.—**Lynley**

**Appointment of Representative and Alternate**

5. The appointment process has now been addressed with the appointment of the Representative to the table of Te Rūnanga o Ngāi Tahu.

**Ann Wakefield applied for this position**

**Nominated by** Jane Davis

**Seconded by** Betty Rickus

Ann spoke about her previous term as the Representative and why we should support her reappointment.

Ann was the only nomination, so she was therefore appointed by the Appointments Committee as our representative for a term of 3 years.

6. Alternate to the Representative to the table of Te Rūnanga o Ngāi Tahu.

**Hikatea Bull reapplied for this position**

**Nominated by** Vera Gleeson

**Seconded by** Karina Davis—Marsden

Hikatea spoke about her role over the previous three years and her desire to be involved again for the next three years.

**Tracey Wright-Tawha also applied for this position.**

**Nominated by** Muriel Johnstone

**Seconded by** Jane Davis.

Tracey gave an overview of why she wants to be the Alternate and what she could bring to this position.

Due to both candidates being eligible for this position there needed to be a vote by secret ballot. Votes were collected, then the Appointments Committee counted the votes and delivered the decision back to the hui.

It was a close vote! Sandra explained the criteria for being able to vote.

**Hikatea Bull was reappointed as the Alternate.**

Thanks to the Appointments Committee and the scrutineers.

**Moved by Ann Wakefield that the papers be destroyed**

**Seconded by** Shona Fordyce

**Carried**



Congratulations to Hikatea and thank you to Tracey for standing and offering your expertise for this position. We should be respectful and congratulate you both on standing, knowing that the other had stood. Both have the capacity to do good for our Rūnaka. Tracey you have a lot to contribute to our committee.

Hikatea thanked everyone for the vote of confidence and she also encouraged Tracey to keep trying. Tracey was grateful for the opportunity and keen to keep going.

**Election of one  
Executive  
Member:**

8. We now have a vacancy to fill on the Executive Committee after Dave Taylor resigned earlier in the year. With this in mind, Sandra called for nominations for an Executive member, following criteria for accepting a position on to the Executive.

- Meetings are currently being held twice a month
- One week night (mostly in Invercargill)
- One after the General Monthly Meeting
- Some hui in Invercargill, some by tele conference which allows for better participation.
- Next task is to get policies and procedures into place and set the direction.

**Calling for nominations**

Sue Crengle nominated Karina Davis Marsden  
Seconded by Shona Fordyce

Teina Wilmshurst nominated Tracey Wright-Tawha  
Seconded by Ron Bull senior

Lynley nominated Kyle Davis  
Seconded by Karina Davis Marsden  
Kyle declined

Nominations closed.

Joe suggested that if we have extras who are interested, why can't we invite both of them on to the Executive? If not just on the Executive, then being part of it all. This isn't possible due to the rules of the Consitution. It can be changed but we can't do anything until the Consitution is changed.

Hikatea then made a motion that later was retracted.

Congratulations to both Karina and Tracey who have both been put on the Executive. Sorry, a mistake has occurred here. We only required one Executive member, so now we have to go to the voting process. Discussions followed as to how we can arrange for them both to be part of our Executive. If Ann resigned as an Executive member and stayed on as just the Representative, this would be possible however, this isn't applicable in our Constitution and until this has been changed we shouldn't try and implement it.

Tracey declined her nomination. Congratulations to Karina who is now the new Executive member.

We need to look at the Constitution again. Members are welcome to come to Executive hui, keeping in mind that they will not have speaking or voting rights. Don't be too harsh on ourselves as its not until occassions like this arise that we need to look at things.

**Conclusion:**

With no further business to hand the hui was closed at 11.50 a.m.

# Your Executive Committee



Above: Sandra Cook—Kaiwhakahaere



Above: Stewart Bull – Vice Kaiwhakahaere



Above: Rangimāria Suddaby—Secretary



Above: Jane Kitson—Treasurer



Above: Ann Wakefield—Representative at the table of Te Rūnanga o Ngāi Tahu



Above: Sue Crengle—Executive Member



Above: Karina Davis—Marsden—Executive Member

**PORTFOLIO**

**REPORTS**



# Ōraka Aparima Rūnaka

## Kaiwhakahaere Report 2016

Kei tē Mihi

It is my pleasure to Report back to the members of Ōraka Aparima Rūnaka on our finances and activities for the 2015-16 Financial Year. The three things that have stood out for me over the last year were the historical tasks the executive was able to tidy up, the increase in participation rates of our members and the significant increase in regulatory responsibilities we have as a rūnanga.

After approximately 20 years the name of Ōraka Aparima Rūnaka was finally on the title of 115 Palmerston Street. The property was gifted to Ōraka Aparima Rūnaka by the old Aparima Māori Committee when it went out of existence but for some reason the land register was not updated. With the help of Geraldine Brookman (Office of Te Rūnanga) our staff and the remaining members of that Committee, the legal niceties were completed and the title is now with the rūnanga.

The purchase of a Whitebait Stand had also been on the rūnanga action list for a number of years and this year we were finally able to secure a site on the Aparima River for the use of our members. The stand has created a fair degree of excitement and interest as a small team of members worked on the health and safety and booking issues.

The number of people attending our monthly rūnanga meetings are gradually increasing and new faces are appearing on a regular basis at meetings and to assist with our projects. One of the highlights of the year was the establishment of a taurahere group, established in Ōtautahi under the leadership of Kyle Davis and Anna Brankin.

A priority for the executive has been getting to grips with our responsibilities under the new Health and Safety legislation. Again, input from our staff was invaluable. Our first test came when Rarotoka was given a significant funding boost late in the financial year. The funding was made available to undertake some of the work required from a health and safety perspective and to start to catch up on some deferred maintenance. We learned that we had to have a robust health and safety plan in place as did our local contractors. Having to manage three sets of contractors, getting a lot of material together and getting it safely to and from Rarotoka was a challenge and we learned quite a lot from the experience.

The end result was that all of the chimneys were either totally removed from the three houses, two multi-fuel burners were installed, new wiring and a secure input from a generator was completed for each house, spouting was installed on two of the houses and a host of smaller jobs were completed. All of this was achieved without incident despite the inclement weather.

We are also coming to terms with our obligations under the Vulnerable Children Act and its implications for some of the programs we want to run for our tamariki and rangatahi.

As a rūnanga we welcomed one new face on to our executive, Karina Marsden-Davis replaced Dave Taylor who stood down during the year. The focus of the executive over the last year has been to increase our capacity within our office, to make a start on prioritising the mahi of the rūnanga, to increase the engagement of our members and to continue to align the mahi of the rūnanga and of our charitable company.

We have been very fortunate in retaining the same staffing level as we had last year and as each month goes by we see the advantages of having a stable committed team to assist with various projects as well as our day to day mahi. The extra assistance for the executive and the ability to delegate operational tasks has been of enormous

benefit to lightening the load on executive members. Looking forward, we are hoping to gradually expand our capacity in some critical areas such as education and language capabilities.

I would like to express my personal thanks to our staff, my fellow members of the executive, kāhui kaumātua, and all of the members of Ōraka Aparima Rūnaka who have attended hui or represented Ōraka Aparima Rūnaka in any capacity during the year.

In terms of our finances, as you will see by the consolidated accounts of Ōraka Aparima Rūnaka Inc and Ōraka Aparima Rūnaka Holdings Company we remain in a sound financial position with an excess of income over expenditure of \$82,942 with our equity standing at \$3,148,886.

As I stated last year, the wealth of the rūnanga is not to be found in our financial statements. It is to be found in the shared bonds of whakapapa of the members of Ōraka Aparima Rūnaka and the value that they place on the mahi done by our rūnanga, our staff and our active members. If you have yet to attend one of our rūnanga meetings or become engaged in any of our activities I hope you will read through this Annual Report and get an appreciation of this mahi we do and join with me in thanking those who have contributed to another successful year.

Me he manawa tītī me tōna hiringa, kia hoki anō i te whatumanawa o te whānau.

*Like the courageous heart of the tītī in all its glory, let the passion of the people return.*

Nā Sandra Cook



Above: Rarotoka—a view of the lighthouse that was once manned by a light-house keeper but is now automated.

Below: Tī kouka line the main track up to one of the houses on Rarotoka.





**Riki Dallas**

- **Kaihautū**

Kia ora koutou,

My first year of working for the Rūnaka, has been filled with discovery. I thought I knew quite a lot regarding the Rūnaka business, only to find that I know very little. Personally, I wish to acknowledge the work and support of the Rūnaka staff, the Executive, Kāhui Kaumātua, volunteers and the many members that have contributed, offered advice and supported the Rūnaka throughout the year.

There has been several personal highlights which include, my first visit to Rarotoka, completion of a Manawa Tītī Leadership programme and Tikanga Māori programme, along with my first year of Te Reo studies.

On the work front, I'm happy to report that budgets and financial processes are in a good place, our rental buildings are fully tenanted, along with other properties which are now compliant.

The Rūnaka now have Health and Safety Policies and Procedures in place for most of our operations. The only major acquisition has been the purchase of a Whitebait stand on the Aparima for whānau use.

Staff work hard to ensure members are fully engaged and have opportunities to be involved with their Rūnaka as they so wish, which has been noticeable with the increased numbers volunteering to help, and our general monthly hui turnouts.

On the horizon, we have several exciting developments and opportunities, the Tamariki Marae programme, Te Reo Strategy, Holding Company, and the Web Site and Marae development to name a few.

I look forward to serving and supporting our Rūnaka and members in every way I can.

Ngā Mihi

Riki Dallas—Kaihautū



**Right:** Riki and Nigel Eason—Deputy Principal of Riverton Primary School during the presentation of certificates and the Ōraka Aparima Rūnaka trophy at the Western Southland inter-school Ki O Rahi tournament which was held at Takutai o Te Tītī marae.



### **Stewart Bull**

- Deputy Kaiwhakahaere
- Te Āo Marama Inc.—TAMI
- Conservation Board—Conservation Management Strategy
- Fiordland Marine Guardian—Pathways Plan
- Executive member

### **Te Ao Marama Inc.**

I have had the pleasure of sitting in the Chairman position this past term, as per annual turnover of that position. It has been pretty much business as usual and once again a lot of focus on water management! We are privileged to have the support from Te Rūnanga o Ngaī Tahu staff to help us through this minefield. I'm of the opinion that if we can get our water quality and quantity right, then we have more than likely got the best of our activities right. As this washes over, these activities will indicate sustainable utilisation. There has been a fair amount of time spent trying to strengthen our relationship with Kai Tahu ki Ōtākou, which I consider we are making good headway.

The issue of having a full compliment of staff employed within Te Ao Marama Inc. has always been a challenge as it is today. However, we can only make opportunities available in the hope of attracting those with the interest and skills. Retaining them is an area that we need to focus on.

All in all I believe we are participating in a positive manner with those authorities that oversee our natural environment. As has been said, maybe it's time for a bit more focus on internal participation within our own whānau. At this stage, I am pleased to report that Te Ao Marama Inc. is operating in a positive manner and is financially secure.

### **Conservation Board**

Well it's been another stimulating year sitting on this board and I'm really pleased to see this Conservation Management Strategy for Southland. The Conservation Management Strategy along with Otago, is finally operative. The strategy was a major focus of the board over the last term. It was first notified in 2013 for public submission after formulating it in the first place and then the hearings process, through to recommendation for approval to the New Zealand Conservation Authority who then gave the approval at their June hui.

With all of that behind us, the new focus is now to review the Fiordland National Park Plan. These plans and strategies normally have a ten year time span, so it is important that we all take notice of what is being proposed within these documents, which dictate how we participate in and around those places captured by these plans and strategies.

The board membership that I have been working with over the last term, has been a great team to be associated with. However, it is always interesting to see the lack of understanding of kaupapa Māori. I don't think it's through not wanting to understand but more from not being exposed to kaupapa Māori, as they are all keen to get involved when the occasion arises. Another interesting fact I observed was, the constant battle to get the Department of Conservation to interact with the board and to keep us fully informed at all times. It's pretty much the same issues that go on in our Kaitiaki Rōpu? I consider this is a consequence of the constant changes happening internally within the Department of Conservation.

### **Fiordland Marine Guardians**

It's been another good, positive year working with this group of people. As we move through monitoring the impact of humans in the Fiordlands, we find that the mahi doesn't decrease so we need to refocus at times. After ten years with Malcolm Lawson at the helm, we have a new Chair—Rebecca McLeod, who has a strong background in marine science. Some of the areas we have focussed on submitted on the new Marine Protection Areas Act as we believe we have a good understanding of the M.P.A.

Undaria and the Management of Pest Species, the Marine Pests Pathway Plan is currently being considered by Environment Southland which has come about as a consequence of the undaria incursion into Sunday Cove and Breaksea Sound—Fiordland. This incursion happened six years ago and it has only been through constant surveillance and continued eradication that we feel we are on top of the problem which has been an expensive exercise that points to the need for prevention in the first place.

Doubtful Sounds internal waters were reopened to recreational blue-cod fishermen with a bag limit of one blue-cod per person in the waters of Doubtful / Bradshaw / Thompson complex.

Overall, the Guardians could be likened to the hub of the local and national agencies that have obligations to the management of Fiordland. Therefore, we constantly work hard to ensure the focus is on, what's best for Fiordland.

Nā Stewart Bull



The main beams in the wharekai at Takutai o Te Titi marae.





### Rangimāria Suddaby

- Secretary of Ōraka Aparima Rūnaka
- Iwi Representative for Resource Teacher of Learning and Behaviour—Murihiku
- Iwi Representative for Museum Teacher—Murihiku
- Executive Member

There have been changes in the Ōraka Aparima Rūnaka Education scene. The Ministry of Education no longer support Te Mahere Matauraka projects as they once did. Instead, Te Rūnanga o Ngaī Tahu along with Te Tapuae o Rehua and the Ministry of Education, are now contracting services to Rūnaka for projects etc.

At Ōraka Aparima, I, along with Ellen Pe'a, have facilitated one of the projects (SELO 3) which involved 20 hours support time at each centre, for the teachers in kaupapa Māori. The Riverton Kindergarten and the Riverton Early Childcare Centre benefitted from this. We are all hopeful that there will be some programme in the future for these centres to awahi the teachers which in turn, impacts on our tamariki and mokopuna.

Mō tātou, ā, mō ka uri a muri ake nei.

It has been a very busy year with Executive mahi, Mātauraka (Education) and as a member of the Rūnaka who, when able, supports the many kaupapa that come our way. Our monthly Rūnaka hui have been well attended with more whānau attending hence more kōrero and sharing.

I wish to thank my fellow Executive members who are charged with many of the secretarial duties due to my having full time employment elsewhere. A big mihi ki a koutou.

He tino mihi ki ngā Office Staff for their support, generosity of time and awahi. Mauri ora koutou!

There have not been the usual kanohi ki te kanohi hui / Wanaka held this year with 'our' schools (14+) and learning institutions. I can only surmise – like us at Rūnaka Executive level, there has been an increase of expectations put on these schools and priorities are being set.

*"If it's of benefit to us then pick it up and mahi te mahi, otherwise waiho (leave well alone!)."* A message from our chairperson.

Kupu Ia Rā and Puzzle Page are still being written and are available for members who attend our monthly Rūnaka hui. Now that Ōraka-Aparima has a Facebook page, along with the office staff, we try to keep the contributions newsy and informative. <https://www.facebook.com/OrakaAparimaRunakaPanui> Go on in and like us! Remember, all we take on and the mahi we do is for our mokopuna. They are our future so I am happy to be a kaitiaki for them.

Ka tārere mai ngā Tai o Whakaraupo ki ngā Tai o Te Ara a Kiwa.

Tīhei Mauri Ora

Nā Rangimāria Suddaby



**Jane Kitson**

- **Treasurer and Executive Member**  
(and water monitoring enthusiast)

Kia ora whānau!

Another year has gone by and the rūnaka finances are in very good stead, as you can see in the financial reports. The office has been working on ensuring that financial reporting is clearer to rūnaka members and aligned more closely to projects, which will help future strategic project planning.

In addition to my role as treasurer, I have been involved in the research program - Ngā Kete o te Wānanga: Mātauranga, Science and Freshwater Management. This research is designed around the idea that the bringing together of mātauranga Māori and science knowledge systems will inform and improve decision making and collaborative management of freshwater in New Zealand.

With Ngāi Tahu ki Murihiku, we have been working on developing a Murihiku Cultural Water Classification System. This year's mahi included extensive fieldwork consisting of three hikoī, undertaken along Te Ara Koroka Dart/Slipstream Pounamu trail, which is approximately 270 km in length from the upper Whakatipu to the sea. Twenty different whānau members over three different generations were involved in monitoring a total of 25 sites. These sites included: 4 lakes, 13 rivers/streams, two wetlands, and one estuarine site of significance to Murihiku whānau.

We have used mātauranga Māori and historical information sources, alongside social and biophysical science approaches, to describe the current state and condition of Murihiku cultural values (e.g., pounamu processing, pā tuna, recreation, and tourism) at these significant sites. This new and extensive dataset is currently being collated and analysed to describe the water-related dependencies of Murihiku cultural values.

A huge thank you to those whānau who have been involved in this project so far.

Nā Jane Kitson



**Above:** Upper Whakatipu monitoring rōpu.



### **Ann Wakefield**

- Te Rūnanga o Ngāi Tahu Representative
- Iwi Governance Committee, Southern District Health Board
- Executive Member

#### **Ngā mihi mahana whanau**

#### **Representative, Te Rūnanga o Ngāi Tahu**

Our Ngāi Tahu Holdings Company and subsidiaries continue to go from strength to strength with fantastic financial returns and exciting new ventures such as Watsons (Manuka Honey), Hilton Haulage, Southern Lakes Glacier Helicopters and most recently, Tekapo Earth and Sky.

From a governance perspective, this has been an incredibly challenging year. There has been increasing division and mistrust at the table and an unhealthy crossover between governance and management and most appalling, leaks to the media. A call to address perceptions of nepotism and review appointment processes, form and function and membership of the committees, code of conduct etc. have been hard fought.

The catchphrase—devolution, is being freely bandied about and Te Rūnanga will be having a wānanga on this in October. It will be intriguing to hear the different interpretations, as I hear a lot of loud voices calling for tino rangatiratanga and more pūtea but still wanting the office and Ngāi Tahu staff to continue to provide a full range of support services.

As many of you will be aware, the Kaiwhakahaere Tā Mark Solomon announced that he will not be re-standing as the Representative for Kaikōura Rūnanga who will be commencing their election processes shortly. This has suddenly put the spotlight on our lack of succession planning for the very near future. Mark has held the role of Kaiwhakahaere for 18 years and is respected by business, political, community and other Iwi.

How do we as a tribe move past our troubled teenage years? What will our structure look like? Who do we look to, to lead us into the future?

#### **Iwi Governance Committee—Southern District Health Board**

I feel the Iwi Governance Committee has continued to tread water this year with little of significance to report. There will be no board elections this year and the Crown has extended the Commissioners role out to 2019. Te Rūnanga unsuccessfully lobbied the Select Committee to consider formally appointing a dedicated Ngāi Tahu Commissioner.

The Hospital Advisory Committee and joint Disability Support Advisory/Community and Public Health Advisory committees have been re-established. The CEO Carole Heatley, resigned after 5 years in the role and Chris Fleming—Chief Executive from Nelson Marlborough Health will be the interim Chief Executive whilst the recruitment process is run. The major focus has been the hospital redevelopment planned for Dunedin.

#### **Rūnaka Executive**

Another enjoyable and busy year of mahi. My involvement with this committee provides me with an avenue to

stay connected with the many work streams, projects and aims and aspirations of the Rūnaka, particularly in relation to my role as Te Rūnanga o Ngāi Tahu Representative whilst keeping me grounded.

A big thank you to the other Executive members, Kāhui Kaumātua and our office team for their continued support and good humour.

Mauri Ora

Ann Wakefield



Two views of the Takitimu ranges.

Below: Taken from Te Kōawa Turoa o Takitimu.



**Right:** Ōraka Aparima members admiring the touchstone that was loaned to DoC by the Rūnaka.



From left: Jane Davis, Dave Taylor, Muriel Johnstone, Betty Rickus, Ann Wakefield and Helen Brown.



### Shona Fordyce

- Member of Kāhui Kaumātua for Ōraka Aparima Rūnaka
- Southland Heritage and Building Preservation Trust
- Rūnaka Representative
- Iwi Representative
- Iwi Representative to N.Z Cervical Screen Steering Committee
- Co-ordinator for a Health Group for Meals on Wheels deliveries

Tēnā koutou i te whānau whānui o Ōraka Aparima Rūnaka.

I seem to be busy even though I am not on the executive and the Southland Heritage Trust as I was previously. The Southland Heritage Trust has now combined with Otago. I was nominated to represent our Rūnaka on the Southland Heritage and Buildings Preservation Trust and I really enjoy the mahi with this group, especially our project with Kohi Kohi Cottage in Aparima. Actually, I find it very enjoyable but slow. I guess funding etc. has to be constantly gathered in and checked along with the work that is being attended to, which all takes time! I've worked with various members on the previous Trust and I am again on this Trust.

I am an iwi representative on the New Zealand Cervical Screening Steering Committee in which Southland has combined with Otago. I find this group interesting because of my previous nursing experience but I have said before, that I wish our whānau would get their checks done. Māori always seem to lag behind other ethnicities, which I find embarrassing. Our tane also need to look after themselves and ensure that they have regular health checks. So, couples need to remind each other the importance of keeping Good Health.

I enjoy being a member of our Rūnaka Kāhui Kaumātua with whom I've spent time with, clearing the Taonga room etc. We also have plans to do other work.

Working at the Citizens Advice Bureau as a volunteer is very rewarding and one is constantly learning data to try and keep up with the many queries we are asked. Raising funds by being a volunteer at the Hospice Shop is also very rewarding because you know that you are helping with the care and treatment of those in need. As well as this, I organise a Health Group of drivers to deliver meals on wheels in the city and as a committee member, I am involved with delivering winter parcels and Christmas cakes later in the year, which are always well received.

I appreciate the staff in our Office and thank them for the excellent mahi they all do in house and about our rohe and also the Executive for their mahi and all the volunteers for their assistance with keeping our Rūnaka motoring along.

Anei he whakatauki hei whakaoti taku kōrero.  
(Here is a proverb to conclude my kōrero).

*He tōtara wahi rua, he kai na te toki.*  
Keep together, in division is defeat.

Nā Shona Fordyce



**Right:** Shona at work at the Hospice Shop in Murihiku



### **Muriel Johnstone**

- Resource Management/Natural Resources
- Kaitiaki Rōpu—Department of Conservation
- Tangata Tiaki/Kaitiaki
- Kāhui Kaumātua

### **Representation (Te Rūnanga o Ngai Tahu Appointment)**

- Guardian of the Lakes—Manapōuri, Monowai and Te Anau
- Taramea (Howells Point) Tribal Property, Management Committee (Chair)

Tēnā koutou Whanauka mā,

During the past year, mahi has continued in all of the above. I am happy to provide this report for all members to read.

### **Resource Management / Natural Resources**

RMA consents have quieted in some areas of Murihiku but not here where we have land/farm development, forestry, building, stream—river and coastal works, fishing, mining—prospecting, beach ‘gold’ dredging, pest management and more. Tourism related concessions especially in the Te Anau—Rua o Te Moko—Piopiotahi—wider sounds and mountains have increased greatly as visitor demands grow.

Along our South Coast, smaller and new ideas/businesses are taking place (some don’t require consents etc.) but have the potential to impact negatively on already fragile areas. In our very wide takiwā, we can all assist in a Kaitiakitanga role by becoming more aware of our surroundings and natural environment. It’s often the little things that cause damage over time, like driving through or parking on sand dunes, disrupting streams, eroding fragile cliff faces being ‘artistically’ carved/drawn on etc. etc. Mostly, people are unaware that these actions are not appropriate so education—matauraka and kindly kōrero may help. Let us know if you see things of concern.

Requests from the public, individuals, private businesses, community organisations, tourism etc. keep coming in for help/advice/information about the Rūnaka, Ngāi Tahu history, places and stories. Some, but not all requests are deemed appropriate and care is taken about “how much or what” is shared or given away. We can often point them to other ideas.

Information/Interpretation. Panels around several of our towns, places well visited have been provided with some relevant Iwi/Ngāi Tahu korero to help tell of some of our values, history and names etc. So hopefully people will enjoy and respect these. P.S. There are still some older panels with other information not provided by us, so we’re working to have these amended over time.

### **Kaitiaki Rōpu—Department of Conservation**

As of last year, grappling with “changing directions/ways of working in conservation” is on-going. It’s been another challenging year for all but the mahi goes on as we keep in mind the best outcomes for our Taonga—birds, fish, plants etc. within the Conservation Estate and elsewhere. Staying at it and being positive, the Rōpu is working toward a more strategic rather than operational focus in its work with DoC.

### **Tangata Tiaki/Kaitiaki**

As one of a team, I continue to stay abreast of the South Island Customary Fisheries Regulations, rules, information and training, including our annual reporting back to iwi obligations. Authorisations for kaimoana were approved for Tangihanga, Marae, Rūnaka, Hui and Wanaka, significant whānau events and Hosting Manuhiri. Several other applications were declined as they did not meet the criteria set under the above regulations. Applications were

granted from a wide range of iwi including Ngā Puhi, Ngāti Porou, Te Arawa, Ngāti Kahungunu, Te Aupouri, Ngāi Tahu

### **Kāhui Kaumātua**

Kāhui Kaumātua have met regularly for kōrero, and considered plans, ideas and options for future activities. We've helped with research, enquiries, whakapapa, history and records, without forgetting to allow a little creativity i.e. preparing kete-koha for upcoming Te Rūnanga o Ngāi Tahu meeting (February 2017), as well as bookmarks and sachets of Titi feathers for Ngā Puhi kaumātua during their hīkoi south in April 2016.

The 115 Palmerston Street building is repaired and safety compliant so we're moving on to rejuvenate and add to the displays in the Whare Taonga there, and sorting through boxes of records (papers) to ensure important documents are archived—a big task requiring patience and sharp eyes!

and more.

### **Taramea (Howells Point) Management Committee**

'The Point' as it's fondly known by many, continues to attract a large numbers of visitors every day of the year, no matter the weather. (We all know that wild, rocky coastlines are magnificent in a storm and glorious in the sunshine). Management Committee positives for the year—5 Pohowera (little banded dotterel) hatched and survived to fly away; some of the new pingao plants are establishing well, and Section 20—around the back beach area, is now boundary fenced.

Section 20 is approximately 11 hectares—a high value special area, with good diverse cover of intact coastal scrub, trees and several uncommon native species such as mistletoe, ferns and even some that are usually found on Sub-Antarctic Island. Fencing was carried out by a local contractor with costs being met by Te Rūnanga o Ngāi Tahu (re: budget for Tribal Property) as their contribution to this protection. Section 20 is rocky, hilly and not easily accessed. A "drone" was utilised to accurately measure and mark out fence lines and one of our management



From pre-Settlement times, the Moemoea of many of our Tipuna was to see us back on TARAMEA (many ideal sites for a Kaik, Marae or such like) and some of us still keep these dreams alive.

If you or your whānau would like to visit Taramea, to have hīkoi, learn about some of our wahi taonga, special stories and places, or look at possible Kaik—Marae locations, development etc. then please let me know whānau and I would love to show you around.



### **Guardians of the Lakes—Manapouri, Monowai and Te Anau**

As one of two Ngāi Tahu Representatives, (Kaumātua Jane Davis is the other), I attended the 3 meetings of the above. Meridian Energy continue their upgrade mahi at the Manapōuri Power Station which is an efficient and well run station, meeting their obligations to consent conditions and environment.

The eel trap and transfer programme continues and reports are produced with the results to be seen each year. All three lakes have been in the higher level for much of the year (Fiordland has been wet!) - ample water for power production. Shoreline vegetation monitoring, regional reports on didymo including other algae growth, and Dusky Sound Dolphin Studies etc. have all been satisfactory. Although the "power" lakes are just Manapōuri, Monowai and Te Anau, Lake Hauroko is also checked and monitored as a Comparative Study.

Pioneer Energy with its smaller power station, directs water from Lake Monowai outlet through a channel to its power house and then discharges out-flow to the Waiau River. Some upgrading work continues on from the previous year and they are currently working on developing new and interesting information/interpretation panels to tell the powerhouse story and our relationship with the Lake and area.

Kia ora mai rā  
Ka mihi nui  
Nā Muriel



### Betty Rickus

- Murihiku Advisory Komiti—Corrections
- Murihiku Advisory Group—Police
- Tangata Tiaki/Kaitiaki
- Te Āo Marama Incorporated—Alternate
- Ngā Kete Mātauranga Pounamu Trustee
- Kāhui Kaumātua

Kei te mihi whānau

#### **MAK—Māori Advisory Komiti— Department of Corrections**

I am one of the founding members of this group which I have thoroughly enjoyed being involved with and working within this environment. Thank you to everyone who has supported me in this role. This year the Rūnaka appointed an alternate for this position which has worked out well. I appreciate the support this person offers me.

There are some fantastic programmes being offered to prisoners which are run by different Māori and community organisations who feel that we definitely make a difference. The Tikanga Māori programme is very popular and has gained a huge interest with the inmates who consistently attend on a regular basis. The difference this has made to Māori inmates has definitely been noticed by others and they too, want to be a part of it. Well done to the facilitators.

On that note, more facilitators are required to run numeracy and literacy programmes on the inside which helps offenders to prepare for the outside world. Prisoners prefer to work in groups rather than as individuals and they respond better to short, intense programmes.

The Department of Corrections has had a very busy year with the prison being almost at full capacity which is the result of a change to the system where prisoners on remand are held for longer periods at the prison. There is a need for a Māori Focus Unit in the South Island. Prisoners who want to participate in this have to go to the North Island which can be detrimental to them as those prisons are known to be more violent.

This year the prison introduced an Audio Visual Suite where prisoners can communicate with their lawyers or appear before a judge etc. without having to leave the prison grounds. This has reduced the man time involved, cost and transport of prisoners. There has been extensive alterations and improvements made over the past year which hasn't impacted on the everyday routine of the prison and prisoners. Overall, there is an increase in home detention cases and a decrease in short term prison sentencing as well as a better connection between the police, the public and the offenders.

Ōraka Aparima Rūnaka has entered an agreement with the prison for the inmates to raise seedlings for us which will then be given back to us when they are mature enough to plant. This is an initiative that has been talked about for several years and now, it has finally come to fruition. We can't wait to see what the outcome will be. We are concentrating mainly on grasses and natives etc. which can be planted at our tribal properties. Thank you to Muriel Johnstone and Cathy Onellion for supplying and sourcing these plants and seeds.



## **MAG—Māori Advisory Group—New Zealand Police**

Once again, I have had a long and satisfying association with MAG. The police interact with many different community groups and do an amazing job to provide a safer environment for us all. The Rūnaka has also appointed an Alternate for this position too which has proved very successful.

Turning of the Tides is a programme aimed at crime prevention amongst Māori to:

- give them a second chance,
- keep them out of the courts,
- prevent them from having a criminal record,
- offer pre-charge warnings and
- make a difference in their lives.

By the end of September 2015, the Turning of Tides had received over 400 referrals. This is a process where police refer an offender or prospective offender on to an agency for further help. Once they are in the system, they will be helped as well as their whole whānau which allows the agencies to identify who else in the whānau is coming through.

It was suggested that an iwi or marae justice system could be an advantage within Murihiku where each marae could hold their own sessions or deal with offender Murihiku wide. This would make an offender of Ngai Tahu descent accountable to their marae and kaumātua. This is a very powerful tool!

Through the current system, it costs an average of \$4,000 to send an offender to court. Our view is that this model is very successful due to:

- Three out of four arrests are eligible for pre charges
- Less Māori are now being charged, fewer convictions
- If the crime is for violence, the case will not be considered for pre charges
- All pre charge cases are looked at weekly
- Every case is looked at individually
- Kaupapa Māori should be a requirement with all pre charges
- This programme is being modelled for Europeans and not just Māori as first intended

At this stage, this is still in the 'Perhaps' basket. There will be a committee set up to look into this to see if it is worth progressing further to the next stage.

Another big kaupapa this year has been whānau violence. We as an iwi, need to stand up and take some responsibility. Take care of your whānau and neighbours, and put a stop to the violence but keep yourself safe. We are lucky enough to have good service providers in our region which the police have access to.

The Māori Wardens continue to be a pillar of strength in our community. The police can call on and liaise with the wardens to communicate directly and inconspicuously with whānau. The wardens offer assistance to all people and in some cases, it's before the police become involved. So, our Māori Wardens deserve a lot respect for their role in the community.

## **Tangata Tiaki / Kaitiaki**

We receive a large number of applications for kaimoana permits which are processed in the office after being approved by the panel of Tangata Tiaki / Kaitiaki. This process works well as it is not the sole responsibility of just one person. We often attend Mahinga Kai forums and other hui to keep us up to date with new laws and regulations and also to share experiences etc. We are all responsible for the preservation of kaimoana and need to ensure that our areas aren't overfished and that harvesters abide by the law.

## **Te Ao Marama Incorporated (TAMI) —Alternate**

I haven't attended many of these meetings this year however, there are many changes in store for TAMI but after much discussions and consultation, the review has been well received. Muriel Johnstone still considers many of the

Resource Consents for our Rūnaka and forwards comments to TAMI for processing. I would like to thank Muriel for her diligence and the many hours she puts into this as

well as Stewart Bull, who as our TAMI representative also puts in many hours on our behalf. We are very appreciative of all the mahi that is done on our behalf behind the scenes!

**Ngā Kete Mātauranga Pounamu Charitable Trust—Trustee**

The team at Ngā Kete Mātauranga Pounamu have continued to provide a wide range of services throughout the year. A great accomplishment was, being awarded the Southern Stop Smoking contract and seeing team staff numbers increase from two full time staff to nine, including additional support roles at head office. My congratulations to our Chief Executive Officer—Tracey Wright-Tawha, who worked through a tough process to reach this outcome, and also to the existing team who without their efforts, the task of application would have been more challenging.

The team have made strong headway with the Cornerstone accreditation pathway and are on track to have this in place by June 2017. The Board meet regularly where we consider the business of the Trust and its financial robustness and accountability. The latest audited financial report reflected a strong level of far-sightedness.

In four years time, the Trust will have been operational for twenty years which I am proud to say, I’ve been a part of for the last sixteen years. I look forward to the road ahead and to the Trust reaching the twenty year milestone. The Trust continues to make a difference for the thousands of whānau who use their services. I am very pleased with the activity of the Trust and thank all my fellow Board members for their time, energy and commitment. I also thank Tracey Wright-Tawha for her remarkable leadership qualities and the amazing sixty strong staff members whose commitment and expertise has made Ngā Kete Mātauranga Pounamu Trust the success it is today.

**Kāhui Kaumātua**

I am one of four Kāhui Kaumātua who meet on the odd occasion to discuss various kaupapa that may require our input or assistance within our guidelines. We function under the guidance and support of the Ōraka Aparima Rūnaka Executive and also receive administration support and assistance from the office. Our kaupapa is varied yet interesting and although we’re still in our infancy, we have the ability, knowledge and heart to progress this rōpu further.

I enjoy the camaraderie of Kāhui Kaumātua and would like to thank the Rūnaka for all the support over the last 12 months. Thank you also to the office staff for their assistance and help when needed. We are always greeted with a warm welcome and a cup of tea and biscuit on arrival.

Nā Betty Rickus



**Left:** Taken outside the whareniui at Takutai o Te Tītī Marae, Ōraka after a hui with MAK—Māori Advisory Komiti.



### **Tāne Davis**

- Chairman—Whenua Hou Committee  
Ōraka Aparima Rūnaka Representative

Tēnā koutou katoa

Being the Ōraka Aparima Rūnaka representative on the Whenua Hou Committee, I am pleased to report the following kōrero. The Whenua Hou Committee members have made a consistent effort to meet when required and although in the past, we have tried to maintain the policy to meet on Whenua Hou, the weather has prevented this from happening. The Whenua Hou Committee are hoping to meet on the island around November - December this year, that is, if the weather allows it. It's important to acknowledge the need to meet on the island.

Seeing is believing, to get a more hands on approach to manage the island. So what's been happening? The Whenua Hou Committee with the Department of Conservation (DoC) maintain to meet twice yearly however, a third hui would help to ease the workload. The last Whenua Hou Committee hui was held 27<sup>th</sup> August 2016.

#### **Items on the agenda:**

##### **Interpretation Panel**

The Interpretation Panel for Whenua Hou is well advanced. The booklet is in draft form and still awaiting approval from Kaitiaki Roopu. Both panel and booklet are a tool that would be available for visitors to the island which will raise the awareness and appreciation of the island's national and international significance.

- Entry applications for Whenua Hou
- Recent applications to enter Whenua Hou
- Scott Mouat - filming the Kākāpō breeding season in March
- Thomas Mattern -Tawaki research September to October
- Modern Dinosaurs – Natural History Whenua Hou
- Josh O'Neil - Whānau visit.
- Te Karaka – Ngāi Tahu film Unit filming unveiling of Pou

##### **Kākāpō**

This years Kākāpō breeding season was highly successful: 47 chicks were hatched, 37 now still surviving, bringing the total Kākāpō population to 156. Whenua Hou was an extremely busy place during the breeding season and as you can imagine with a percentage of the Kākāpō being hand reared. Meridian Energy are now in partnership with the DoC to fund the Kākāpō Recovery Programme.

### **Excavated material from the 2007 Excavation**

At present, 80% of the material from the 2007 excavation is stored at the Southland Museum. The Whenua Hou Committee have agreed for DoC to advise all four rūnaka in Murihiku that all the material be reported to the Ministry for Culture Heritage, and that all material be kept together as one collection.

### **Mottel Petrel Transfer**

Rachael Sagar has in the past years researched Mottel Petrel on Whenua Hou in preparation for transferring the species in chick form, to Hawkes Bay. The main part of Rachael's work is to ensure the species are in good condition for the transfer, and if not, then the transfer will be abandoned. This will be the third year coming and in 2017, another transfer will take place.

### **Update—Pou Whenua for Whenua Hou**

We had the pleasure of James York attending the meeting to report on the progress of all three Pou. James is happy with the progress being made and is targeting to have all the Pou completed by the end of 2016. To establish the Pou on Whenua Hou, the holes will need to be excavated which will require an Archaeological Authority. Each of the four rūnaka will need to sign off on this.

Athol Anderson will have assistance from Kyle Davis and James York to position the Pou. The Whenua Hou Committee indicated that January 2017 would be a better time of the year, to unveil the Pou on the island.

### **Hine Kite**

The condition of the Pou—Hine Kite, has caused some concern. I viewed the Pou and realised it is irreparable so I contacted and discussed the condition of the Pou with a member of the whānau (Rangi Foggo ) who constructed and placed Hine Kite on Whenua Hou. He agreed that the Pou should be removed but would like it to remain on Whenua Hou once it's removed from its standing place.

### **Whenua Hou mahi for the future**

The Whenua Hou Committee has recognised that the urupā on the island needs to be permanently marked. Of course there will need to be a process to distinguish and identify the plots in this area. A small amount of koiwi was found with the 2007 archaeological excavation which requires it to be returned to the right place.

### **Whare for whānau visits**

The suggestion of a whare being established on Whenua Hou for whānau visits has received a positive reaction from DoC and the Whenua Hou Committee. This is only at the suggestion stage. DoC have offered to investigate the regulatory framework to assess the viability of a whare on the island. A whare being established for whānau visits and the placement of the 3 new pou on Whenua Hou is an exciting prospect for us all.

### **Whenua Hou Committee and the Department of Conservation**

The Whenua Hou Committee and DoC continue to work together with the management of Whenua Hou. A vast range of discussions are tabled with a positive participation from all involved. It's pleasing to see new initiatives such as, the idea of establishing a whare on the island. DoC continue to provide secretarial services, fund the members meeting fees, and travel to and from Whenua Hou when weather allows.

### **A change of membership on the Whenua Hou Committee**

Fiona Black has stood down to allow John Twiddle to be the Southland Conservation Board's representative and Stewart Bull has been replaced by Gail Thompson. The Whenua Hou Committee thank both Fiona and Stewart for their commitment to the management of Whenua Hou during their terms and also welcome the newly appointed members—Gail Thompson and John Twiddle.

The current members on the Whenua Hou Committee are:

#### **Southland Conservation Board**

John Whitehead  
Lloyd Esler  
Gail Thompson  
John Twiddle

#### **Papatipu Rūnaka o Murihiku members**

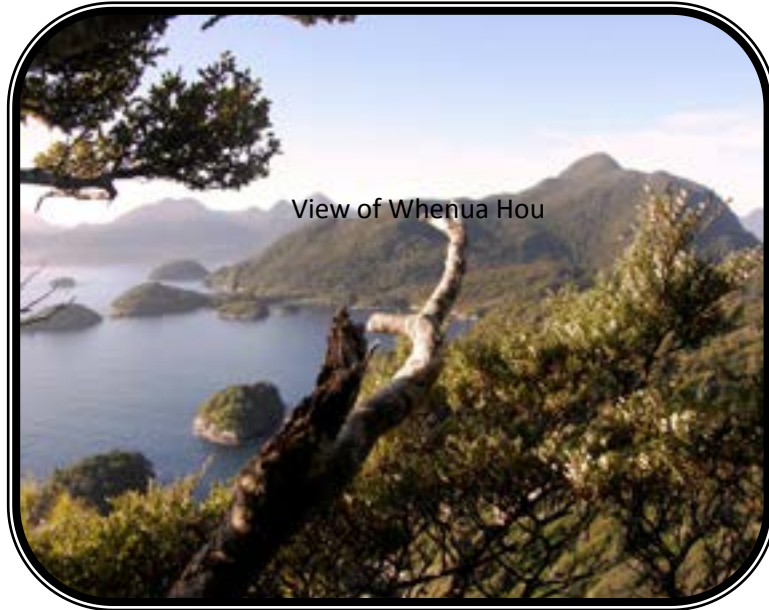
Estelle Leask  
Holm Ryan  
Cyril Gilroy  
Tane Davis  
Awarua Rūnaka  
Hokonui Rūnaka  
Waihopai Rūnaka  
Ōraka Aparima Rūnaka

Whakamutunga

As chair, I'd like to thank and acknowledge my appreciation for the support I receive from the Whenua Hou Committee members and the Department of Conservation as well. It's also important to acknowledge Ōraka Aparima Rūnaka for their ongoing support of me as their representative on the Whenua Hou Committee.

Kia ora tātou katoa

Nā Tane Davis.



**Below:** The pou—Hine Kite—was created and erected by Harold Ashwell and will be replaced with a new one, commissioned by James York.



**Left:** Kākāpō mother with her chick.



**Dougal Austin**

- Ngāi Tahu Maori Rock Art Charitable Trust Representative

Kia ora tātou,

I am pleased to report that the Ngāi Tahu Māori Rock Art Trust is in sound financial shape thanks to a new annual funding commitment from Ngāi Tahu, and continued financial contributions from Moeraki, Waihao and Arowhenua rūnanga. The Trust is also benefiting from the considerable financial experience of its newest Trustee, Peter Lyman. The Trust has taken over managing the Timaru Information Centre – located in the same building as Te Ana Rock Art Centre, and this is turning out to be a worthwhile undertaking. The information centre sells a range of goods including Māori merchandise which without a doubt, is the best place to go in Timaru to buy pieces of Māori art. If there are any creative whānau out there who are looking for an outlet for their work, please contact:

Amanda Symon [curator@rockarttrust.co.nz](mailto:curator@rockarttrust.co.nz).

We are currently working with Burke Museum of Seattle, to help facilitate the return of a long-lost piece of rock art. The rock art in question is a shark-like motif that was removed from the Maerewhenua site in Otago around 1916, by an American, J.L Elmore and then, it was illegally taken overseas when he left the country. If all goes well, this taoka will be returned next year. This particular piece was mixed up amongst Burke Museum's Australian Aboriginal rock art and they didn't know of its true identity until recently.

A range of activities continue to take place out in the field recording rock art and protecting sites. One of the things the Trust has recently become involved with, is a long-term ecological restoration plan for the Opihi site and its surroundings. Funding for this has recently been secured.

Ka nui te mihi,

Dougal Austin

Trustee, Ngāi Tahu Māori Rock Art Trust



**Tracey Wright-Tawha**

- Portfolio: Health & Social Services
- CEO—Ngā Kete Mātauranga Pounamu Charitable Trust
- He Puna Waiora Wellness Centre (very low cost access GP service)
- Range Health & Social Support Services
- Toi Toi Māori Art & Gift Shop
- Murihiku Māori Warden Board Member



Ngā mihi mahana whānau

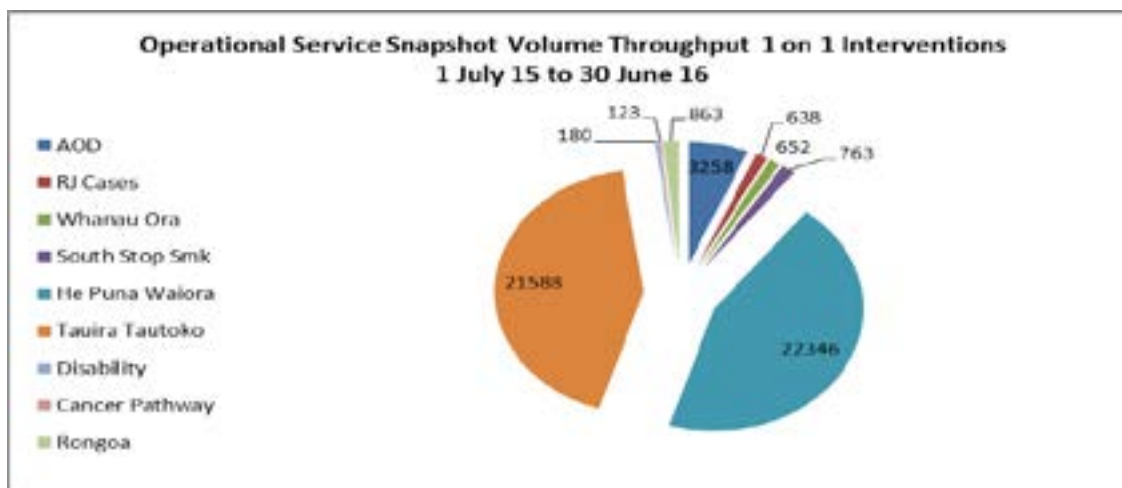
Over the year we have seen sound growth resulting in a staff compliment of 60 employees delivering a wide range of health and social support services. Staff is supported by several unit managers with senior executive staff in quality assurance and HR rounding out a motivated team.

**Highlights:**

He Puna Waiora Wellness Centre: Professional service with in excess 2,500 enrolled patients of which 70% are high complex needs, 55% enrolled are Māori. Our low prices, 3 late evening options and walk in Mondays are proving popular in providing access choice for patients where cost is low, e.g. 18 years plus \$17.50 per GP consultation. We continue to seek another fulltime GP to our service.

Southern Stop Smoking is a contract we have worked over the last 15 months to secure (having delivered services locally for 11 years). The Ministry of Health extended an offer to us to provide services southern wide given their confidence in our delivery ability. We now provide services to the biggest remote geographical delivery area in Aotearoa with a dedicated team of nine.

Te Piringa our Māori Public Health team produced with whānau support a Cook Book called He Pātaka Oranga. It was our pleasure to send copies to Te Rūnanga o Ngāi Tahu for distribution amongst the 18 Ngāi Tahu Papatipu Rūnaka. The wonderful letter received from Ta Mark Solomon’s office further validated the hard work of the staff involved. This book is another useful tool for Marae and whānau in presenting healthy kai options when hosting manuhiri. The book also chronicled Arahi Māori Women’s Welfare League Presidents over a number of years.



- 50,411 interventions carried out in a one on one session. In addition we facilitated 120 groups with an average participant number of 6-9 per group.

## Ngā Taonga After School Programme:



We were pleased to sponsor the Ngā Taonga Afterschool Programme—a teachers and parents initiative (separate from the school), which helped Māori tamariki with homework, kapa haka and cultural identity development.

We accompany the group on various field trips and support with weekly fruit.

Waiata Wednesday is a weekly highlight at Taura Tautoko the student support centre we facilitate at the Southern Institute of Technology. Kaumātua attend weekly and spend time with students singing and chatting creating further a home away from home experience.

Wero Challenges (stop smoking group competitions) resulted in several Murihiku groups winning precious funds for their community e.g. pepi pods, resources for the Arahi Māori



In addition we have run a Dad's in Prison Parenting programme focusing on retaining a level of parental connection but on a deeper level a period of reflection and growth in what it means to be a dad.

Ngā Kōhanga programme on developing Kōhanga capacity and capability in terms of curriculum and policy development as it pertains to best practice.

In November 2015, we celebrated our most precious resource – our staff, with our annual Staff Awards. We rocked out with a band, amazing lunch and awards in recognition of the many spectacular efforts evidenced.



In closing, I give thanks to our Board, Greg Fordyce (Chair), Jane Davis, Sally West, Betty Rickus and Lesley Rewi who ably guide the mother ship at the governance level. Mīharo!



Mauri ora !

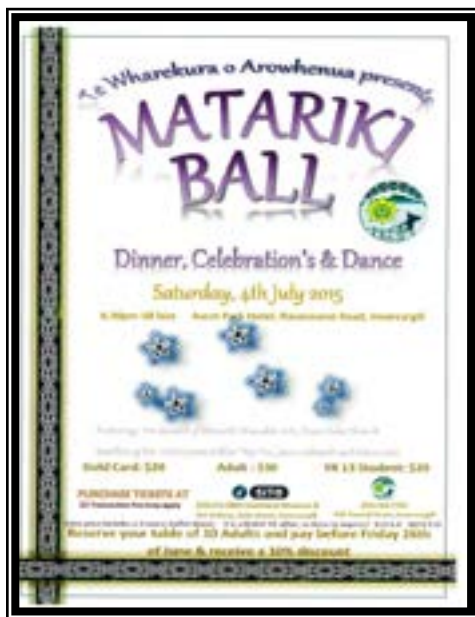
Nā Tracey Wright-Tawha



# Our Year 2015 – 2016

## July 2015

- Hui with Ngā Pūhi
- Matariki Ball
- Governance training
- Riki Dallas commenced work as Kaihautū
- Te Reo lessons at the office commence
- Cultural Mapping hui
- Ngā Kete o Te Wānanga RAG Hui
- Social Housing hui



## August 2015

- Te Reo Strategy launch
- Nominations for the Appointment Committee
- Freshwater Conservation Iwi Leaders Group Regional Hui
- Social Housing hui
- Iwi Liaison Committee hui
- Cultural Association and Use Mapping wānanga

## September 2015

- Principals Hui at Takutai o Te Titi
- Water waste hui
- Textiles & Archaeological finds around Otago
- Kiwi transfer from Haast
- DoC—Great Walks korero
- Manawa Hou rōpu at Te Koawa Turoa o Takitimu
- Ngā whetū me ngā rangi wānanga



## October 2015

- AGM hui
- Mining Project hui—Murihiku
- Water and Land Plan hui
- Waka ama challenge
- Species Recovery Restructure hui





**November 2015**

- Te Ara Whakatipu Programme
- Te Anau Captive Management Centre—Conservation Hub (Project Group hui)
- Māori Housing hui
- Hui ā Iwi—Dunedin
- Tenure review—Iwi inspection of Mount Hope Station
- Shot over Jets 50th celebrations

**January 2016**

- Whanau working bee at Te Kōawa Tūroa o Takitimu
- Marine protection hui
- Te Koroka Ara whānau monitoring hīkoi
- Rūnanga advisory hui

**February 2016**

- Southern Pounamu Management Plan Hui
- Tribal economic wānanga
- Cultural mapping hui
- Moeraki investment hui
- Mararoa River Restoration Project celebration
- Manawa Titi
- Te Koroka Ara whānau monitoring hīkoi

**March 2016**

- Kākā picnic
- Te Waiau Mahika Kai Trust hui
- TRoNT Business Planning/Aspirations hui
- Marine Protected Areas Reform engagement
- Te Waiau Mahika Kai Trust hui with Ōraka Aparima Rūnaka
- Cultural Tourism Economic Seminar in Kaikoura—Riki attended
- Whakatipu Accord



**December 2015**

- Kawarau River bridge blessing
- Te Anau Captive Management Centre Conservation Hub (Project Group hui)
- Whānau Xmas Party



**Above:** Betty Rickus at the Shot over Jet 50th celebrations

**Right:** Hana koko





**April 2016**

- Tahu FM broadcast from Ōraka Aparima office for 2 days
- Nga Puhi kaumātua arrival at Takutai o Te Tītī
- Water and Land Plan Schedule consultation hui
- Kōiwi received
- Meet and greet the CEO and Leadership Team at Invercargill prison
- O-Hūpōkeka Haerenga

**Below:** Shona Fordyce at the Pink Ribbon breakfast held at Takutai o Te Tītī marae.



**May 2016**

- Administrative Professionals Day Lunch
- Te Reo Māori Strategy hui
- Ki o Rahi tournament
- Noho marae—Verdun College
- Whānau Ora Iwi Leadership hui a iwi
- Pink ribbon breakfast
- Ngā Taonga Tamariki programme
- Te Hokika mai o Te Pou Whenua o Huruheru
- OAR Taurahere Group hui in Christchurch

**June 2016**

- Tāne whaikōrero wānanga
- Awarua Bay international migratory birds workshop
- Cultural mapping
- Polyfest
- Guardians hui and workshop with Meridian



**Above:** Ōraka Aparima Rūnaka kapa haka rōpu



Te Koroka Ara Whānau water monitoring volunteers.



Tane Davis and Donald Wright with the Ōraka Aparima waka

# Thank you to our Sponsors

We wish to acknowledge and thank the following agencies for their contributions over the last year. Without your generosity, help and support, our progress would falter.

## Kotahi Mano Kāika



Above: The restoration project on Rarotoka.

Above: Iain MacCallum and Carol Elder during a taonga species transfer of kiwi.



Above: Brothers - Reti and Rānui Bull discussed project possibilities with Ngāi Tahu Fund personnel.



Lynley McKay and Riki Dallas

# Grants and Scholarships

Ōraka Aparima Rūnaka and Ōraka Aparima Rūnaka Holdings Ltd. gave out grants and scholarships that totalled \$18,382.45 during 2015 -2016. With those funds, we assisted 77 whānau members to participate, attend or up skill in various activities etc.

These included:

- Upgrade skills in First Aid Courses—9 people
- Sporting and cultural participation (including the Kapa Haka championships and Manu Kōrero speeches) - 6 people
- Pūtea ka Rūnaka Scholarships for students enrolled in tertiary education—6 people
- Assistance for members to attend hui further afield—12 people
- Kaumātua hīkoi—4 kaumātua
- Rūnaka volunteers who help above and beyond the call of duty—30 people



**Above:** Amiria, Aaron and Hana Davis.

Amiria won 1st place in the Murihiku Pūtake Kōrero speech competitions in the Senior Māori section, Hana was placed 1st in the intermediate section and Aaron was placed 3rd in the junior section of the Manu Kōrero competitions.



**Above:** Dakota Crengle competed in the Moore's Park Speedway Team Race, an event his team—the Oreti Guns, won.



**Above:** The Ōraka Aparima Rūnaka kapa haka rōpu performing at the Polyfest in Murihiku.

# A tātou tangata, a tātou wāhi.

(Our people, our places)



Above: Lynley McKay, Mike MacRoberts (TV 3 presenter), and Shona Fordyce at the Admin Professionals lunch held in Invercargill..

**Above:** Jane Davis and Jodi Cameron with a taonga taiaha—Te Pou Whenua o Huruhuru—Protector of the land, which was welcomed back to Takutai o Te Titi marae, all the way from Australia.



**Left:** Dene Cole; taking a break while on a Te Ara Koroka water monitoring hīkoi—Murihiku cultural water classification system research.



**Betty Rickus** receiving a long service certificate from the Department of Corrections for her years of service on the Maori Advisory Komiti.



**Above:** Ōraka Aparima Rūnaka stalwarts of the Kāhui Kaumātua Rōpu.

**Back from left:** Shona Fordyce and aunty Jane Davis.

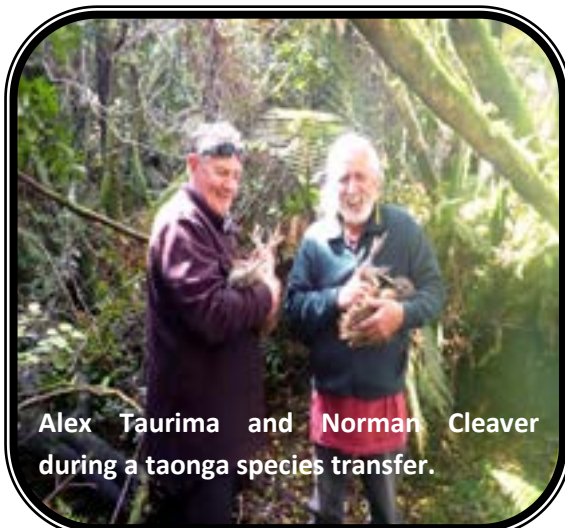
**Front from left:** Muriel Johnstone and Betty Rickus



Time out for Jane Kitson and some of the volunteers on one of her water monitoring projects.



**Left:** Rangimaria Suddaby, Vera Gleeson, Betty Rickus and Jane Davis.



Alex Taurima and Norman Cleaver during a taonga species transfer.



Nick Low and Dave Taylor taking a break during the O-Hūpōkeka haerenga.



Gary Davis leads the kids with a haka during the Kaka picnic. They were privileged to name some of the Kaka—pictured below.



Tim Low and Dave Taylor at Te Waewae Bay during the O-Hūpōkeka haerenga.



# **Financial**

# **Report**

## **2015—2016**





## **Financial Report**

**For the Year Ended**

**30 June 2016**

**Ōraka-Aparima Rūnaka Incorporated**  
**Financial Report**  
 For the Year Ended 30 June 2016

**Table of Contents**

<b>Statement of Income and Expenditure</b>	page	<b>3</b>
<b>Statement of Assets and Liabilities</b>	page	<b>4</b>
<b>Notes to the Financial Statements</b>		
<b>Administration Income</b>	page	<b>6</b>
<b>Administration Expenditure</b>	page	<b>6-7</b>
<b>Te Rūnaka Projects</b>	page	<b>8</b>
<b>On-going Projects funded by Grants</b>	page	<b>9-11</b>
<b>Property, Plant &amp; Equipment</b>	page	<b>12</b>
<b>Equity</b>	page	<b>13</b>

**Ōraka-Aparima Rūnaka Incorporated**  
**Statement of Income and Expenditure**  
 For the Year Ended 30 June 2016

	Note	2016	2015
<b>Administration of Te Rūnaka</b>			
Te Putea Whakamahi Distribution	1	400,000	360,000
Rental Income	2	47,377	47,199
Interest Income		11,855	18,638
Dividend Income		3,103	2,770
		<u>462,335</u>	<u>428,607</u>
Less Administration Expenditure	3	337,181	240,636
Less Depreciation	4	<u>10,991</u>	11,443
		<u>(348,172)</u>	<u>(252,079)</u>
		114,163	176,528
Income Tax	5	(20,866)	(30,794)
<b>Administration Surplus after Tax:</b>		<u><b>93,297</b></u>	<u><b>145,734</b></u>
<b>Activities &amp; Projects funded by Te Rūnaka</b>			
Income	6	107,132	20,568
Less Expenditure	6	156,151	100,188
Less Depreciation	7	8,407	9,513
		(164,558)	(109,701)
<b>Cost of Activities &amp; Projects funded by Te Rūnaka</b>		<u><b>(57,426)</b></u>	<u><b>(89,133)</b></u>
<b>On-going Projects funded by Grants</b>			
Grants Received in the year	8	45,000	24,588
Spent on Projects in the year	8	(36,506)	(18,081)
		<u><b>8,494</b></u>	<u><b>6,507</b></u>
<b>Net Income over Expenditure for the year</b>		<u><b>44,365</b></u>	<u><b>63,108</b></u>

The accompanying notes form part of and must be read in conjunction with these financial statements.

**Ōraka-Aparima Rūnaka Incorporated**  
**Statement of Assets and Liabilities**  
 As at 30 June 2016

	Note	<u>2016</u>	<u>2015</u>
<b>Current Assets</b>			
Westpac Bank		515,006	606,412
Accounts Receivable		75,009	7,730
Ōraka-Aparima Rūnaka Holdings Ltd		-	14,695
Income Tax Refundable	9	53,026	37,046
GST Refundable		<u>-</u>	<u>13,131</u>
		643,041	679,014
<b>Non-current Assets</b>			
Company Shares		26,650	26,650
Property Plant & Equipment	10	839,143	<u>794,920</u>
		865,793	821,570
<b>Total Assets:</b>		<b><u>1,508,834</u></b>	<b><u>1,500,584</u></b>
<b>Current Liabilities</b>			
Ōraka-Aparima Rūnaka Holdings Ltd		2,461	-
Accounts Payable		23,361	62,292
GST Payable		355	-
<b>Total Liabilities:</b>		<b><u>26,177</u></b>	<b><u>62,292</u></b>
<b>Net Assets:</b>		<b><u>1,482,657</u></b>	<b><u>1,438,292</u></b>
<b>Equity of Te Rūnaka:</b>	11	<b><u>1,482,657</u></b>	<b><u>1,438,292</u></b>

The accompanying notes form part of and must be read in conjunction with these financial statements.

**Ōraka-Aparima Rūnaka Incorporated**  
**Notes to the Financial Statements**  
 For the Year Ended 30 June 2016

**Statement of Accounting Policies**

**Reporting Entity:** Te Ōraka-Aparima Rūnaka Incorporated (Te Rūnaka) is an Incorporated Society registered under the Incorporated Societies Act 1908.

**Statutory Base:** These financial statements have been prepared in accordance with financial reporting standards and generally accepted accounting policies appropriate to the circumstances of Te Rūnaka.

**Measurement Base:** The measurement systems adopted in the preparation of these financial statements are;

- The measurement base is historical cost.
- Reliance has been placed on the assumption Te Rūnaka is a going concern.
- Income earned is matched with expenditure incurred using accrual accounting.

**Specific Accounting Policies** applied in preparing these financial statements are:

- **Property Plant and Equipment** is recorded at cost less accumulated depreciation.
- **Depreciation** is calculated at rates allowed for income tax purposes and which write off the cost of fixed assets over their estimated useful lives. Buildings are not depreciated. All other plant and equipment is depreciated at rates ranging from 11.4% to 80.4 % calculated on diminishing value. Diminishing value is cost less total accumulated depreciation to the end of the previous year.
- **Income Tax** charged against profit for the year is the estimated liability for the current year after taking advantage of all deductions.
- **Goods and Services Tax.** All income and expenses (except for rental dwellings) are recorded exclusive of GST. Assets and liabilities are also recorded exclusive of GST except for receivables and payables which are GST inclusive.
- **Project Grants** from other organisations and grant money spent is recorded as income and expenditure in the year of receipt and payment. Grants not fully spent in the year of receipt are transferred to equity. The statement of unexpended grants shows funds still available for spending.

**Changes in Accounting Policies:** There have been no changes in accounting policies. All accounting policies have been applied on a basis consistent with those used in the previous year.

**Ōraka-Aparima Rūnaka Incorporated**  
**Notes to the Financial Statements**  
For the Year Ended 30 June 2016

<b>Note Administration Income</b>	<b>2016</b>	<b>2015</b>
1. Ōraka-Aparima Rūnaka is a member of Te Rūnanga o Ngāi Tahu and received Te Putea Whakamahi Distributions totalling: Less Maori Authority Tax Credits - refer note 9 Distribution received in money:	400,000 <u>(70,000)</u> 330,000	360,000 <u>(63,000)</u> 297,000
2. Rents received from dwellings; office premises; land at Colac Bay and Te Koawa Turoa o Takitimu	<u>47,377</u>	<u>47,199</u>
<b>Administration Expenditure</b>		
3.1. Communication		
Advertising	1,227	2,068
Telephones & Postages	3,289	2,458
Printing and Stationery	6,182	5,612
	<u>10,698</u>	<u>10,138</u>
3.2. Fees		
Accounting	17,855	16,050
Auditing	3,700	3,700
Banking and Other	861	267
	<u>22,416</u>	<u>20,017</u>
3.3. Equipment - IT and Printing Business Information System	... 4,762	6,528
3.4. Occupancy		
Electricity and Heating	8,088	6,148
Rates	16,902	11,277
Insurance	24,534	23,823
	<u>49,524</u>	<u>41,248</u>

The accompanying notes form part of and must be read in conjunction with these financial statements.

**Ōraka-Aparima Rūnaka Incorporated**  
**Notes to the Financial Statements**  
 For the Year Ended 30 June 2016

<u>Note</u> Administration Expenditure continued	<u>2016</u>	<u>2015</u>
<b>3.5. Personnel</b>		
Salaries	184,892	86,716
ACC Levies	250	261
Honoraria	22,090	10,000
Executive Meetings and Duties	3,205	6,021
Conferences and Training	1,182	1,030
Food & Beverages	1,560	1,350
Recruitment	45	1,610
	<u>213,224</u>	<u>106,988</u>
<b>3.6. Repairs and Maintenance</b>		
Buildings	22,562	49,089
Other	2,435	2,320
	<u>24,997</u>	<u>51,409</u>
<b>3.7. Travel</b>		
Motor Vehicle Expenses	5,337	3,357
Travel and Accommodation	6,223	951
	<u>11,560</u>	<u>4,308</u>
<b>3. Total Administration Expenditure:</b>	<u><b>337,181</b></u>	<u><b>240,636</b></u>
<b>4. Depreciation has been charged on:</b>		
Plant & Equipment	4,459	4,856
Vehicles	3,173	3,967
Furniture and Fittings	3,359	2,620
	<u>10,991</u>	<u>11,443</u>
<b>5. Income Tax is payable at 17.5 cents in the dollar on the taxable income of Te Rūnaka, which has elected to be treated as a Maori Authority. Tax provided for 2016 is 20,866 on taxable income of 119,234</b>	<u><b>20,866</b></u>	<u><b>30,794</b></u>

The accompanying notes form part of and must be read in conjunction with these financial statements



**Ōraka-Aparima Rūnaka Incorporated**  
**Notes to the Financial Statements**  
For the Year Ended 30 June 2016

<b>Note</b>	<b>Income 2016</b>	<b>Expended 2016</b>	<b>Net 2016</b>	<b>Net 2015</b>
<b>6.1. Te Rūnaka Activities:</b>				
Koha	3,709	3,273	(436)	5,967
Tangi	-	1,840	1,840	1,271
Hui	-	5,690	5,690	6,714
Christmas	-	2,835	2,835	2,831
Marae	2,679	14,904	12,225	23,868
Taonga	-	2,193	2,193	-
<b>Total Te Rūnaka Activities:</b>	<b>6,388</b>	<b>30,735</b>	<b>24,347</b>	<b>40,651</b>
<b>6.2 Te Rūnaka Projects</b>	<b>Income 2016</b>	<b>Expended 2016</b>	<b>Net 2016</b>	<b>Net 2015</b>
Rarotoka	75,744	97,732	21,988	8,442
Ki o Rahi	-	252	252	2,426
O-Kōura	-	-	-	744
Taramea	-	675	675	-
Waka Ama	-	626	626	2,976
Te Ao Marama	12,500	5,298	(7,202)	-
Te Kele o Aoraki	-	-	-	1,714
Whale Strandings	-	1,725	1,725	19,214
Kapa Haka	5,000	14,026	9,026	3,453
Education	2,500	5,082	2,582	-
Wharekai Renovations	5,000	-	(5,000)	-
<b>Total Te Rūnaka Projects:</b>	<b>100,744</b>	<b>125,416</b>	<b>24,672</b>	<b>38,969</b>
<b>Total Activities and Projects funded by Te Rūnaka</b>	<b>107,132</b>	<b>156,151</b>	<b>49,019</b>	<b>79,620</b>
			<b>2016</b>	<b>2015</b>
<b>7 Depreciation has been charged on:</b>				
Marae Plant and Equipment			3,100	3,081
Rarotoka Plant and Equipment			4,404	5,142
Waka Ama			903	1,290
			<b>8,407</b>	<b>9,513</b>

The accompanying notes form part of and must be read in conjunction with these financial statements.

**Ōraka-Aparima Rūnaka Incorporated**  
**Notes to the Financial Statements**  
For the Year Ended 30 June 2016

Note	On-going Projects funded by Grants	2016	2015
8	<b>Mahinga Kai, Kai Moana, Kai Awa, Kai Roto</b>		
	Grant SDHB 10/6/2011	4,340	4,340
	Expenditure	(425)	(425)
	Unexpended Grant 30/6/2016	3,915	3,915
	<b>Ki Uta Ki Tai</b>		
	Grant TRoNT 24/6/2011	8,280	8,280
	Expenditure	(8,173)	(8,173)
	Unexpended Grant 30/6/2016	107	107
	<b>O-Kōura</b>		
	Grant TRoNT 24/6/2011	4,430	4,430
	Expenditure	(4,090)	(4,090)
	Unexpended Grant 30/6/2016	340	340
	<b>Tautoko Poupou</b>		
	Grant DoC 15/8/2011	3,478	3,478
	Expenditure	-	-
	Unexpended Grant 30/6/2016	3,478	3,478
	<b>Whenua Hou</b>		
	Grant TRoNT 22/12/2011	15,540	15,540
	Grant TRoNT 21/5/2013	20,000	20,000
	Grant DoC 18/6/2013	20,000	20,000
	Project Generated Income	11,913	11,913
		67,453	67,453
	Expenditure	(31,720)	(31,720)
	Unexpended Grant 30/6/2016	35,733	35,733
	<b>Ki o Rahi</b>		
	Grant SDHB 2/3/2012		6,087
	Expenditure		(6,087)
	Closed 30/6/2015		-
	<b>Subtotal</b>	<b>43,573</b>	<b>43,573</b>

The accompanying notes form part of and must be read in conjunction with these financial statements.

**Ōraka-Aparima Rūnaka Incorporated**  
**Notes to the Financial Statements**  
For the Year Ended 30 June 2016

		2016	2015
<b>Note</b>	<b>On-going Projects funded by Grants</b>		
8	Unexpended Grants from Page 9	Subtotal	43,573
	<b>Te Māhere Matauraka</b>		
	Grant TRoNT 19/4/2013	6,000	6,000
	Grant TRoNT 7/5/2014	5,000	5,000
	Grant TRoNT 20/2/2015	10,000	10,000
		<u>21,000</u>	<u>21,000</u>
	Expenditure	(7,266)	(7,266)
	Unexpended Grant 30/6/2016	13,734	13,734
	<b>Kaupapa Atawahi</b>		
	Grant DoC 26/6/2013	2,000	2,000
	Expenditure	-	-
	Unexpended Grant 30/6/2016	2,000	2,000
	<b>Nga Poupuu o Te Mokō o Tu</b>		
	Grant TRoNT 28/6/2013	29966	29966
	Expenditure	(25,909)	(25,909)
	Unexpended Grant 30/6/2016	4,057	4,057
	<b>Papakaika Reo</b>		
	Grant TRoNT 5/6/2014	5,208	5,208
	Expenditure	(2,636)	(1,725)
	Unexpended Grant 30/6/2016	2,572	3,483
	<b>Whaikōrero &amp; Tikanga</b>		
	Grant TRoNT 24/6/2014	11,071	11,071
	Expenditure	(4,080)	(4,080)
	Unexpended Grant 30/6/2016	6,991	6,991
	<b>Te Koawa Turoa o Takitimu</b>		
	Grant DoC 24/5/2014	15,000	15,000
	Expenditure	-	-
	Unexpended Grant 30/6/2016	15,000	15,000
		Subtotal	87,927
			88,838

The accompanying notes form part of and must be read in conjunction with these financial statements.

**Ōraka-Aparima Rūnaka Incorporated**  
**Notes to the Financial Statements**  
 For the Year Ended 30 June 2016

	2016	2015
<b>Note On-going Projects funded by Grants</b>		
<b>8 Unexpended Grants from Page 9</b>	<b>Subtotal 87,927</b>	<b>88,838</b>
<b>Kaumatua</b>		
Grant TRoNT 17/2/2015	4,088	4,088
Expenditure	-	-
Unexpended Grant 30/6/2016	4,088	4,088
<b>OAR Holdings Ltd</b>		
Grant OAR Holdings Ltd 24/4/2015	10,500	10,500
Expenditure	<u>(10,500)</u>	-
Unexpended Grant 30/6/2016		10,500
<b>Whenua Hou Pou</b>		
Grant TRoNT 18/12/2015	45,000	-
Expenditure	<u>(25,095)</u>	-
Unexpended Grant 30/6/2016	19,905	
<b>Total Unexpended Grants 30/6/2016</b>	<b><u>111,920</u></b>	<b><u>103,426</u></b>
<b>Balance at start of year</b>	<b>103,426</b>	<b>96,919</b>
<b>Add - Increases during year</b>		
Grants received	45,000	24,588
<b>Less - Expended on Projects during the year</b>	<b>(36,506)</b>	<b>(18,081)</b>
<b>Balance at end of year held in Equity</b>	<b><u>111,920</u></b>	<b><u>103,426</u></b>

The accompanying notes form part of and must be read in conjunction with these financial statements.

**Ōraka-Aparima Rūnaka Incorporated**  
**Notes to the Financial Statements**  
 For the Year Ended 30 June 2016

Note	<u>2016</u>	2015
<b>9 Assets</b>		
<b>Income Tax Refundable</b>		
<b>Balance at the start of the year</b>	<b>37,046</b>	<b>31,908</b>
Tax refunds received	(36,251)	(31,245)
Income tax provided for the year - refer note 5	(20,866)	(30,794)
Tax credits available to offset payment of tax:		
Withholding Tax & Imputation Credits	3,097	4,177
Maori Authority Tax Credits on Te Putea		
Whakamahi Distribution - refer note 1	70,000	63,000
<b>Balance at the end of the year - tax refundable</b>	<u><b>53,026</b></u>	<u><b>37,046</b></u>

**10 Property, Plant & Equipment**

	Cost	Accum Depcn	Book Value 2016	Book Value 2015
Land	42,373	-	42,373	42,373
Buildings	846,735	155,192	691,543	647,881
Plant and Equipment	65,743	49,405	16,338	17,965
Marae Plant and Equipment	65,393	36,962	28,431	23,479
Furniture and Fittings	40,952	24,194	16,758	11,042
Vehicles	42,233	29,538	12,695	15,868
Rarotoka Plant	53,088	24,246	28,842	33,246
Waka Ama	24,811	22,648	2,163	3,066
	<u><b>1,181,328</b></u>	<u><b>342,185</b></u>	<u><b>839,143</b></u>	<u><b>794,920</b></u>

The accompanying notes form part of and must be read in conjunction with these financial statements

**Ōraka-Aparima Rūnaka Incorporated**  
**Notes to the Financial Statements**  
 For the Year Ended 30 June 2016

<b>11 Equity</b>	<u><b>2016</b></u>	<u><b>2015</b></u>
<b>Balance at the start of the year</b>	<b>1,438,292</b>	<b>1,375,184</b>
Add surplus of administration income over expenditure-after tax	93,297	145,734
Less excess of expenditure over income for projects and activities funded by Te Rūnaka	(57,426)	(89,133)
Add surplus of grants over expenditure for on-going projects funded by grants	8,494	6,507
<b>Balance at the end of the year</b>	<u><b>1,482,657</b></u>	<u><b>1,438,292</b></u>
<b>12 Capital Commitments at the end of the year</b>	<u><b>250,000</b></u>	<u><b>NIL</b></u>
<b>13 Contingent Liabilities at the end of the year</b>	<u><b>NIL</b></u>	<u><b>NIL</b></u>

The accompanying notes form part of and must be read in conjunction with these financial statements.



# Janet C. Horrell

## Chartered Accountant

### AUDIT REPORT TO THE MEMBERS OF THE EXECUTIVE COMMITTEE OF ORAKA – APARIMA RUNAKA INCORPORATED

I have audited the Annual Report. It provides information about the financial performance of Oraka-Aparima Runaka Incorporated for the year ended 30 June 2016 and the financial position as at 30 June 2016. This information is stated in accordance with the accounting policies set out therein.

#### COMMITTEE'S RESPONSIBILITIES

The members are responsible for the preparation of a financial report that gives a true and fair view of the financial position of the organisation and of the results of operations for the year ended 30 June 2016

#### AUDITOR'S RESPONSIBILITIES

It is my responsibility to express an independent opinion on the financial report presented by the executive committee and report my opinion to you.

#### BASIS OF OPINION

An audit includes examining, on a test basis, evidence relevant to the amounts and disclosures in the financial statements.

It also includes assessing:

- the significant estimates and judgements made by the executive committee in the preparation of the financial report and
- whether the accounting policies are appropriate to the Oraka-Aparima Runaka Incorporated's circumstances and consistently applied and adequately disclosed.

I conducted my audit in accordance with New Zealand Auditing Standards and have carried out such procedures as I considered necessary in order to provide me with sufficient evidence to give a reasonable assurance that the financial statements are free from material misstatements, whether caused by fraud or error. In forming my opinion I also evaluated the overall adequacy of the presentation of information in the financial statements.

#### QUALIFIED OPINION

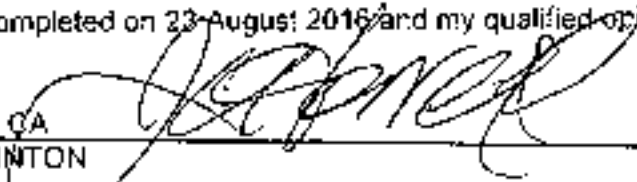
In common with other organisations of a similar nature, control over some income prior to its being recorded is limited, and there are no practical audit procedures to determine the effect of this limited control. Subject to this in my opinion:

- proper accounting records have been kept by Oraka-Aparima Runaka Incorporated as far as appears from the examination of these records, and
- the financial statements comply with generally accepted accounting practice.

In my opinion the Financial Report for the Oraka-Aparima Runaka Incorporated gives a true and fair view of its financial position as at 30 June 2016 and the result of its operations for the year ended on that date.

My audit was completed on 23 August 2016 and my qualified opinion is expressed as at that date.

J.C. HORRELL CA  
AUDITOR – WINTON

  
Ryan Road, Oreti RD 3 Winton 9783  
Telephone: (03) 2368720 or Fax: (03) 2368711  
Email: janet.horrell@velocitynet.co.nz



## **Consolidated Financial Report**

**For the Year Ended**

**30 June 2016**



**Ōraka-Aparima Rūnaka Incorporated**  
**Consolidated Financial Report**  
 For the Year Ended 30 June 2016

**Table of Contents**

<b>Statement of Consolidated Income and Expenditure</b>	<b>page</b>	<b>3</b>
<b>Statement of Consolidated Assets and Liabilities</b>	<b>page</b>	<b>4</b>
<b>Notes to the Consolidated Financial Statements</b>		
<b>Administration Income</b>	<b>page</b>	<b>6</b>
<b>Administration Expenditure</b>	<b>page</b>	<b>6-7</b>
<b>Te Rūnaka Activities:</b>	<b>page</b>	<b>8</b>
<b>Te Rūnaka Projects</b>	<b>page</b>	<b>8</b>
<b>On-going Projects funded by Grants</b>	<b>page</b>	<b>9-11</b>
<b>Income Tax Refundable</b>	<b>page</b>	<b>12</b>
<b>Investments</b>	<b>page</b>	<b>12</b>
<b>Property, Plant &amp; Equipment</b>	<b>page</b>	<b>12</b>
<b>Equity</b>	<b>page</b>	<b>13</b>

**Ōraka-Aparima Rūnaka Incorporated**  
**Statement of Consolidated Income and Expenditure**  
For the Year Ended 30 June 2016

	Note	2016	2015
<b>Administration of Te Rūnaka</b>			
Te Puta Whakamahi Distribution	1	400,000	360,000
Rental Income	2	58,552	50,359
Interest Income		57,620	81,683
Dividend Income		3,103	2,770
		519,275	494,812
Less Administration Expenditure	3	354,011	259,836
Less Depreciation	4	12,524	13,358
		(366,535)	(273,194)
		152,740	221,618
Income Tax	5	(20,866)	(30,794)
		<b>131,874</b>	<b>190,824</b>
<b>Activities &amp; Projects funded by Te Rūnaka</b>			
Income	6	107,132	20,568
Less Expenditure	6	156,151	110,688
Less Depreciation	7	8,407	9,513
		(164,558)	(120,201)
		<b>(57,426)</b>	<b>(99,633)</b>
<b>On-going Projects funded by Grants</b>			
Grants Received in the year	8	45,000	14,088
Spent on Projects in the year	8	(36,506)	(18,081)
		<b>8,494</b>	<b>(3,993)</b>
		<b>82,942</b>	<b>87,198</b>
<b>Net Income over Expenditure for the year</b>		<b>82,942</b>	<b>87,198</b>

The accompanying notes form part of and must be read in conjunction with these financial statements.

**Ōraka-Aparima Rūnaka Incorporated**  
**Statement of Consolidated Assets and Liabilities**  
 As at 30 June 2016

	Note	2016	<u>2015</u>
<b>Current Assets</b>			
Westpac Bank		562,703	658,564
Bank of New Zealand		45,556	-
Accounts Receivable		75,009	7,730
Income Tax Refundable	9	62,111	47,031
GST Refundable		-	13,131
		<u>745,379</u>	<u>726,456</u>
<b>Non-current Assets</b>			
Accounts Receivable	10	-	8,270
Company Shares	10	26,650	26,650
Bank Deposits	10	1,368,645	1,378,100
Property Plant & Equipment	11	1,033,319	990,629
		<u>2,428,614</u>	<u>2,403,649</u>
<b>Total Assets:</b>		<u><b>3,173,993</b></u>	<u><b>3,130,105</b></u>
<b>Current Liabilities</b>			
Accounts Payable		24,752	64,161
GST Payable		355	-
<b>Total Liabilities:</b>		<u><b>25,107</b></u>	<u><b>64,161</b></u>
<b>Net Assets:</b>		<u><b>3,148,886</b></u>	<u><b>3,065,944</b></u>
<b>Consolidated Equity of Te Rūnaka:</b>	12	<u><b>3,148,886</b></u>	<u><b>3,065,944</b></u>

The accompanying notes form part of and must be read in conjunction with these financial statements.

**Ōraka-Aparima Rūnaka Incorporated**  
**Notes to the Consolidated Financial Statements**  
 For the Year Ended 30 June 2016

**Statement of Accounting Policies**

**Reporting Entity:** Te Ōraka-Aparima Rūnaka Incorporated (Te Rūnaka) is an Incorporated Society registered under the Incorporated Societies Act 1908.

**Consolidation:** The consolidated financial statements are of Ōraka-Aparima Rūnaka Incorporated and its 100% owned subsidiary Ōraka-Aparima Rūnaka Holdings Limited. The subsidiary is an investment company and has a balance date of June 30. All significant inter-entity transactions have been eliminated on consolidation. Parent entity financial statements have been prepared separately.

**Statutory Base:** These financial statements have been prepared in accordance with financial reporting standards and generally accepted accounting policies appropriate to the circumstances of Te Rūnaka.

**Measurement Base:** The measurement systems adopted in the preparation of these financial statements are;

- The measurement base is historical cost.
- Reliance has been placed on the assumption Te Rūnaka is a going concern.
- Income earned is matched with expenditure incurred using accrual accounting.

**Specific Accounting Policies** applied in preparing these financial statements are:

- **Property Plant and Equipment** is recorded at cost less accumulated depreciation.
- **Depreciation** is calculated at rates allowed for income tax purposes and which write off the cost of fixed assets over their estimated useful lives. Buildings are not depreciated. Plant and equipment is depreciated at rates ranging from 11.4% to 80.4 % calculated on diminishing value. Diminishing value is cost less total accumulated depreciation to the end of the previous year.
- **Income Tax** charged against profit for the year is the estimated liability for the current year after taking advantage of all deductions.
- **Goods and Services Tax.** All parent entity income and expenses (except for rental dwellings) are recorded exclusive of GST. Parent entity assets and liabilities are also recorded exclusive of GST except for receivables and payables which are GST inclusive. The subsidiary is not registered for GST. Its amounts are consolidated inclusive of GST.
- **Project Grants** from other organisations and grant money spent is recorded as income and expenditure in the year of receipt and payment. Grants not fully spent in the year of receipt are transferred to equity. The statement of unexpended grants shows funds still available for spending.

**Changes in Accounting Policies:** There have been no changes in accounting policies. All accounting policies have been applied on a basis consistent with those used in the previous year.

**Ōraka-Aparima Rūnaka Incorporated**  
**Notes to the Consolidated Financial Statements**  
 For the Year Ended 30 June 2016

<b>Note Administration Income</b>	<b>2016</b>	<b>2015</b>
	<u>          </u>	<u>          </u>
1. Ōraka-Aparima Rūnaka is a member of Te Rūnanga o Ngāi Tahu and received Te Putea Whakamahi Distributions totalling:	400,000	360,000
Less Maori Authority Tax Credits - refer note 9	(70,000)	(63,000)
Distribution received in money:	<u>330,000</u>	<u>297,000</u>
2. Rents received from dwellings; office premises; land at Colac Bay and Te Koawa Turoa o Takitimu	<u>58,552</u>	<u>50,359</u>
<b>Administration Expenditure</b>		
3.1. Communication		
Advertising	1,227	2,068
Telephones & Postages	3,289	2,458
Printing and Stationery	6,182	5,612
	<u>10,698</u>	<u>10,138</u>
3.2. Fees		
Accounting	21,779	21,605
Auditing	4,735	5,943
Banking & Other	1,118	539
	<u>27,632</u>	<u>28,087</u>
3.3. Equipment - IT & Printing		
Business Information System	<u>4,762</u>	<u>6,528</u>
3.4. Occupancy		
Electricity and Heating	10,370	7,616
Rates	19,453	13,899
Insurance	26,366	25,353
	<u>56,189</u>	<u>46,868</u>

**Ōraka-Aparima Rūnaka Incorporated**  
**Notes to the Consolidated Financial Statements**  
For the Year Ended 30 June 2016

<b>Note Administration Expenditure continued</b>	<b>2016</b>	<b>2015</b>
<b>3.5. Personnel</b>		
Salaries	184,892	86,716
ACC Levies	250	261
Honoraria	22,090	10,000
Directors' Fees	134	1,800
Executive Meetings and Duties	3,205	6,021
Conferences and Training	1,182	1,030
Food & Beverages	1,560	2,249
Recruitment	45	1,610
	<u>213,358</u>	<u>109,687</u>
<b>3.6. Repairs and Maintenance</b>		
Buildings	24,985	50,719
Other	2,435	2,379
	<u>27,420</u>	<u>53,098</u>
<b>3.7. Travel</b>		
Motor Vehicle Expenses	5,337	3,357
Travel and Accommodation	6,523	2,073
	<u>11,860</u>	<u>5,430</u>
<b>3.8 Debt written off</b>	2,092	-
<b>3. Total Administration Expenditure:</b>	<u>354,011</u>	<u>259,836</u>
<b>4. Depreciation has been charged on:</b>		
Plant & Equipment	4,653	5,098
Vehicles	3,173	3,967
Furniture and Fittings	4,698	4,293
	<u>12,524</u>	<u>13,358</u>
<b>5. Income Tax is payable at 17.5 cents in the dollar on the taxable income of Te Rūnaka, which has elected to be treated as a Maori Authority. Tax provided for 2016 is 20,866 on taxable income of 119,234. OAR Holdings Ltd is exempt from income tax because of its charitable status.</b>	<u>20,866</u>	<u>30,794</u>

The accompanying notes form part of and must be read in conjunction with these financial statements.

**Ōraka-Aparima Rūnaka Incorporated**  
**Notes to the Consolidated Financial Statements**  
For the Year Ended 30 June 2016

Note	Income 2016	Expended 2016	Net 2016	Net 2015
<b>6.1. Te Rūnaka Activities:</b>				
Koha	3,709	3,273	(436)	5,967
Tangi	-	1,840	1,840	1,271
Hui	-	5,690	5,690	6,714
Christmas	-	2,835	2,835	2,831
Marae	2,679	14,904	12,225	23,868
Taonga	-	2,193	2,193	-
<b>Total Te Rūnaka Activities:</b>	<b>6,388</b>	<b>30,735</b>	<b>24,347</b>	<b>40,651</b>
<b>6.2 Te Rūnaka Projects</b>	<b>Income 2016</b>	<b>Expended 2016</b>	<b>Net 2016</b>	<b>Net 2015</b>
Rarotoka	75,744	97,732	21,988	8,442
Ki o Rahi	-	252	252	2,426
O-Kōura	-	-	-	744
Taramea	-	675	675	-
Waka Ama	-	626	626	7,976
Te Ao Marama	12,500	5,298	(7,202)	-
Te Kete o Aoraki	-	-	-	1,714
Education	2,500	5,082	2,582	500
Whale Strandings	-	1,725	1,725	19,214
Kapa Haka	5,000	14,026	9,026	8,453
Wharekai Renovations	5,000	-	(5,000)	-
<b>Total Te Rūnaka Projects:</b>	<b>100,744</b>	<b>125,416</b>	<b>24,672</b>	<b>49,469</b>
<b>Total Activities and Projects funded by Te Rūnaka</b>	<b>107,132</b>	<b>156,151</b>	<b>49,019</b>	<b>90,120</b>
			<b>2016</b>	<b>2015</b>
<b>7 Depreciation has been charged on:</b>				
Marae Plant and Equipment			3,100	3,081
Rarotoka Plant and Equipment			4,404	5,142
Waka Ama			903	1,290
			<b>8,407</b>	<b>9,513</b>

The accompanying notes form part of and must be read in conjunction with these financial statements.

**Ōraka-Aparima Rūnaka Incorporated**  
**Notes to the Consolidated Financial Statements**  
For the Year Ended 30 June 2016

Note	On-going Projects funded by Grants	2016	2015
8	<b>Mahinga Kai, Kai Moana, Kai Awa, Kai Roto</b>		
	Grant SDHB 10/6/2011	4,340	4,340
	Expenditure	(425)	(425)
	Unexpended Grant 30/6/2016	3,915	3,915
	<b>Ki Uta Ki Tai</b>		
	Grant TRoNT 24/6/2011	8,280	8,280
	Expenditure	(8,173)	(8,173)
	Unexpended Grant 30/6/2016	107	107
	<b>O-Kōura</b>		
	Grant TRoNT 24/6/2011	4,430	4,430
	Expenditure	(4,090)	(4,090)
	Unexpended Grant 30/6/2016	340	340
	<b>Tautoko Poupou</b>		
	Grant DoC 15/8/2011	3,478	3,478
	Expenditure	-	-
	Unexpended Grant 30/6/2016	3,478	3,478
	<b>Whenua Hou</b>		
	Grant TRoNT 22/12/2011	15,540	15,540
	Grant TRoNT 21/5/2013	20,000	20,000
	Grant DoC 18/6/2013	20,000	20,000
	Project Generated Income	11,913	11,913
		67,453	67,453
	Expenditure	(31,720)	(31,720)
	Unexpended Grant 30/6/2016	35,733	35,733
	<b>Ki o Rahi</b>		
	Grant SDHB 2/3/2012		6,087
	Expenditure		(6,087)
	Closed 30/6/2015		-
	<b>Subtotal</b>	<b>43,573</b>	<b>43,573</b>



**Ōraka-Aparima Rūnaka Incorporated**  
**Notes to the Consolidated Financial Statements**  
For the Year Ended 30 June 2016

	<u>2016</u>	<u>2015</u>
<b>Note On-going Projects funded by Grants</b>		
8 Unexpended Grants from Page 9	Subtotal 43,573	43,573
<b>Te Māhere Matauraka</b>		
Grant TRoNT 19/4/2013	6,000	6,000
Grant TRoNT 7/5/2014	5,000	5,000
Grant TRoNT 20/2/2016	<u>10,000</u>	<u>10,000</u>
	21,000	21,000
Expenditure	<u>(7,266)</u>	<u>(7,266)</u>
Unexpended Grant 30/6/2016	13,734	13,734
<b>Kaupapa Atawahi</b>		
Grant DoC 26/6/2013	2,000	2,000
Expenditure	-	-
Unexpended Grant 30/6/2016	2,000	2,000
<b>Nga Poupuu o Te Mokō o Tu</b>		
Grant TRoNT 28/6/2013	29,966	29,966
Expenditure	<u>(25,909)</u>	<u>(25,909)</u>
Unexpended Grant 30/6/2016	4,057	4,057
<b>Papakaika Reo</b>		
Grant TRoNT 5/6/2015	5,208	5,208
Expenditure	<u>(2,636)</u>	<u>(1,725)</u>
Unexpended Grant 30/6/2016	2,572	3,483
<b>Whaikōrero &amp; Tikanga</b>		
Grant TRoNT 24/6/2015	11,071	11,071
Expenditure	<u>(4,080)</u>	<u>(4,080)</u>
Unexpended Grant 30/6/2016	6,991	6,991
<b>Te Koawa Turoa o Takitimu</b>		
Grant DoC 24/5/2015	15,000	15,000
Expenditure	-	-
Unexpended Grant 30/6/2016	15,000	15,000
	<u>Subtotal 87,927</u>	<u>88,838</u>

**Ōraka-Aparima Rūnaka Incorporated**  
**Notes to the Consolidated Financial Statements**  
 For the Year Ended 30 June 2016

	<u>2016</u>	<u>2015</u>
<b>Note On-going Projects funded by Grants</b>		
<b>8 Unexpended Grants from Page 10</b>	<b>Subtotal 87,927</b>	<b>88,838</b>
<b>Kaumātua</b>		
Grant TRoNT 17/2/2016	4,088	4,088
Expenditure	-	-
Unexpended Grant 30/6/2016	4,088	<u>4,088</u>
<b>Whenua Hou Pou</b>		
Grant TRoNT 18/12/2015	45,000	-
Expenditure	<u>(25,095)</u>	-
Unexpended Grant 30/6/2016	19,905	-
<b>Total Unexpended Grants 30/6/2016</b>	<u><b>111,920</b></u>	<u><b>92,926</b></u>
<b>Balance at start of year</b>	<b>92,926</b>	<b>96,919</b>
<b>Add - Increases during year</b>		
Grants received	45,000	14,088
<b>Less - Expended on Projects during the year</b>	<u>(26,006)</u>	<u>(18,081)</u>
<b>Balance at end of year</b>	<u><b>111,920</b></u>	<u><b>92,926</b></u>

**Ōraka-Aparima Rūnaka Incorporated**  
**Notes to the Consolidated Financial Statements**  
For the Year Ended 30 June 2016

Note		<u>2016</u>	<u>2015</u>		
<b>9</b>	<b>Income Tax Refundable</b>				
	Balance at the start of the year	47,031	39,544		
	Tax refunds received	(46,236)	(38,881)		
	Income tax provided for the year - refer note 5	(20,866)	(30,794)		
	Tax credits available to offset payment of tax:				
	Withholding Tax & Imputation Credits	12,182	14,162		
	Maori Authority Tax Credits on Te Pulea				
	Whakamahi Distribution - refer note 1	<u>70,000</u>	<u>63,000</u>		
	<b>Balance at the end of the year - tax refundable</b>	<u><b>62,111</b></u>	<u><b>47,031</b></u>		
<b>10</b>	<b>Investments</b>				
	Wild Kiwi Ltd Loan	-	8,270		
	Shares in Listed Companies	26,650	26,650		
	BNZ Term Deposits	1,368,645	1,378,100		
	Wild Kiwi Ltd was wound up during the 2016 year and \$2,092 of the loan was written off.				
<b>11</b>	<b>Property, Plant &amp; Equipment</b>				
		<b>Cost</b>	<b>Accum Depcn</b>	<b>Book Value 2016</b>	<b>Book Value 2015</b>
	Land	107,333	-	107,333	107,333
	Buildings	969,819	155,192	814,627	770,965
	Plant and Equipment	67,141	50,027	17,114	18,935
	Marae Plant and Equipment	65,393	36,962	28,431	23,479
	Furniture and Fittings	56,439	34,325	22,114	17,737
	Vehicles	42,233	29,538	12,695	15,868
	Rarotoka Plant	53,088	24,246	28,842	33,246
	Waka Ama	24,811	22,648	2,163	3,066
		<u><b>1,386,257</b></u>	<u><b>352,938</b></u>	<u><b>1,033,319</b></u>	<u><b>990,629</b></u>

The accompanying notes form part of and must be read in conjunction with these financial statements.

**Ōraka-Aparima Rūnaka Incorporated**  
**Notes to the Consolidated Financial Statements**  
For the Year Ended 30 June 2016

12 Equity	2016	2015
Balance at the start of the year	3,065,944	2,978,746
Add surplus of administration income over expenditure-after tax	131,874	190,824
Less excess of expenditure over income for projects and activities funded by Te Rūnaka	(57,426)	(99,633)
Less excess of expenditure over income for on-going projects funded by grants	-	(3,993)
Add Surplus of grants over expenditure for on-going projects funded by grants	8,494	-
<b>Balance at the end of the year</b>	<b><u>3,148,886</u></b>	<b><u>3,065,944</u></b>
13 Capital Commitments at the end of the year	<u>NIL</u>	<u>NIL</u>
14 Contingent Liabilities at the end of the year	<u>NIL</u>	<u>NIL</u>



# Janet C. Horrell

## Chartered Accountant

### AUDIT REPORT TO THE DIRECTORS AND SHAREHOLDER OF ORAKA – APARIMA RUNAKA INCORPORATED

I have audited your Consolidated Financial Report for the year ended 30 June 2016 on pages 2 to 13

Consolidated are the Financial Reports of Oraka Aparima Runaka Holdings Limited and Oraka Aparima Runaka Incorporated.

Consolidated are the Statements of Income and Expenditure, Statements of Assets and Liabilities as at 30 June 2016 and Notes to the Financial Statements containing explanatory information on projects and grants, Fixed Assets and showing Movements in Equity

#### **DIRECTOR'S RESPONSIBILITIES**

The directors are responsible for the preparation of financial statements in accordance with generally accepted accounting practice in New Zealand that give a true and fair view of the matters to which they relate. This includes the design, implementation and maintenance of internal control relevant to the preparation of financial statements that are free from material misstatement, whether due to fraud or error.

#### **AUDITOR'S RESPONSIBILITIES**

It is my responsibility to express an independent opinion on the Financial Report based on my audit.

#### **BASIS OF OPINION**

An audit includes examining, on a test basis, evidence relevant to the amounts and disclosures in the financial statements.

It also includes assessing:

- the significant estimates and judgements made by the directors in the preparation of the Financial Report, and
- whether the accounting policies are appropriate to the Oraka-Aparima Runaka Incorporated's circumstances and consistently applied and adequately disclosed.

I conducted my audit in accordance with New Zealand Auditing Standards and have carried out such procedures as I considered necessary in order to provide me with sufficient evidence to give a reasonable assurance that the financial statements are free from material misstatements, whether caused by fraud or error. In forming my opinion I also evaluated the overall adequacy of the presentation of information in the Financial Report.

#### **QUALIFIED OPINION**

In common with other organisations of a similar nature, control over some income prior to its being recorded is limited, and there are no practical audit procedures to determine the effect of this limited control. Subject to this in my opinion:

- proper accounting records have been kept by Oraka-Aparima Runaka Incorporated as far as appears from the examination of these records, and
- the financial statements in the Report comply with generally accepted accounting practice.

In my opinion the Consolidated Financial Report for Oraka-Aparima Runaka Incorporated gives a true and fair view of its financial position as at 30 June 2016 and the result of its operations for the year ended on that date.

My audit was completed on 23 August 2016 and my qualified opinion is expressed as at that date.

J C HORRELL CA  
AUDITOR - WINTON

Ryan Road, Oreti RD 3 Winton 9783

Telephone: (03) 2368720 or Fax: (03) 2368711

Email: [janet.horrell@velocitynet.co.nz](mailto:janet.horrell@velocitynet.co.nz)

# **Ōraka-Aparima Rūnaka Holdings Limited**

**Financial Report**

**For the Year Ended**

**30 June 2016**

**Ōraka-Aparima Rūnaka Holdings Limited**  
**Financial Report**  
**For the Year Ended 30 June 2016**

**Table of Contents**

<b>Company Directory</b>	<b>3</b>
<b>Statement of Financial Performance</b>	<b>4</b>
<b>Statement of Financial Position</b>	<b>5</b>
<b>Notes to the Financial Statements</b>	<b>6</b>
<b>Supplementary Schedule - Fixed Assets and Depreciation</b>	<b>9</b>

**Ōraka-Aparima Rūnaka Holdings Limited**  
**Company Directory**  
**For the Year Ended 30th June 2016**

<b>Directors</b>	Geraldine Brookman Ronald Bull Jane Davis	
<b>Accountants</b>	Aparima Accounting Ltd 57 Main Road Tuatapere	
<b>IRD Number</b>	076 - 200 - 653	
<b>Incorporation Number</b>	1035402	
<b>Shareholder</b>	Ōraka-Aparima Rūnaka Incorporated	100
	Total Ordinary Shares	<u>100</u>
<b>Date of Incorporation</b>	19 June 2000	
<b>Charitable status</b>	Ōraka-Aparima Rūnaka Holdings Ltd is a registered charitable entity under the Charities Act 2005, registration number CC49646	



**Ōraka-Aparima Rūnaka Holdings Limited**  
**Statement of Financial Performance**  
**For the Year Ended 30th June 2016**

	Note	2016	2015
<b>Income</b>			
Interest	2	45,764	63,045
Rent	3	11,175	3,160
		<u>56,939</u>	<u>66,205</u>
<b>Expenses</b>			
Property Expenses	3	10,621	9,165
Directors Fees		134	1,800
Meeting Expenses		<u>300</u>	2,021
		434	<u>3,821</u>
Administration		256	331
Accounting Fees		3,924	5,555
Audit Fees		1,035	2,243
		5,215	8,129
Debt written off		2,092	-
<b>Total Expenses</b>		<u>18,362</u>	<u>21,115</u>
<b>Operating Surplus</b>		<b>38,577</b>	<b>45,090</b>
<b>Charitable Distributions</b>			
Grants Paid	4	<u>-</u>	<u>21,000</u>
<b>Retained Surplus</b>		<b>38,577</b>	<b>24,090</b>
<b>Opening Equity</b>		<b>1,627,652</b>	<b>1,603,562</b>
<b>Closing Equity</b>		<u><b>1,666,229</b></u>	<u><b>1,627,652</b></u>

The accompanying notes form part of and must be read in conjunction with these financial statements.

**Ōraka-Aparima Rūnaka Holdings Limited**  
**Statement of Financial Position**  
**As at 30th June 2016**

	<u>Note</u>	<u>2016</u>	<u>2015</u>
<b>Current Assets</b>			
Westpac Bank		47,697	52,152
Bank of New Zealand		45,556	-
Income Tax Refundable		9,085	9,985
Ōraka-Aparima Rūnaka Inc		2,461	-
<b>Total Current Assets</b>		<u>104,799</u>	<u>62,137</u>
<b>Non-Current Assets</b>			
Receivables	5	-	8,270
Bank Deposits	6	1,368,645	1,378,100
Property, Plant and Equipment	7	194,176	195,709
<b>Total Non-Current Assets</b>		<u>1,562,821</u>	<u>1,582,079</u>
<b>Total Assets</b>		<u>1,667,620</u>	<u>1,644,216</u>
<b>Current Liabilities</b>			
Accounts Payable		1,391	1,869
Ōraka-Aparima Rūnaka Inc		-	14,695
<b>Total Current Liabilities</b>		<u>1,391</u>	<u>16,564</u>
<b>Net Assets</b>		<u>1,666,229</u>	<u>1,627,652</u>
<b>Shareholders' Equity</b>			
Retained Surplus		1,666,229	1,627,652
<b>Total Shareholders' Equity</b>		<u>1,666,229</u>	<u>1,627,652</u>

The accompanying notes form part of and must be read in conjunction with these financial statements.

## **Ōraka-Aparima Rūnaka Holdings Limited**

### **Notes to the Financial Statements**

**For the Year Ended 30 June 2016**

#### **Statement of Accounting Policies**

**Reporting Entity:** Ōraka-Aparima Rūnaka Holdings Limited is a company registered under the Companies Act 1993 and was incorporated on 19 June 2000

**Statutory Base:** These financial statements are prepared in accordance with the Companies Act 1993

**Measurement Base:** The measurement base is historical cost

The following accounting policies which materially affect the measurement of financial performance and the financial position have been applied

**Property Plant and Equipment** is recorded at cost less accumulated depreciation

**Depreciation** is calculated at rates which write off the cost of fixed assets over their estimated useful lives. Buildings are not depreciated. Plant and equipment is depreciated at 20% calculated on diminishing value. Diminishing value is cost less total accumulated depreciation to the end of the previous year

**Income Tax** the company is exempt from income tax

**Goods and Services Tax.** The entity is not registered for GST and therefore the financial statements have been prepared on a GST inclusive basis

**Investments** are recorded at the lower of cost or net realisable value as determined by the directors of the company. Investment income is recognised in the statement of financial performance on an accruals basis

#### **Charitable Entity**

Ōraka- Aparima Rūnaka Holdings Limited is registered as a charitable entity under the Charities Act 2005. Directors approve charitable grants which are paid by the company to the recipients or on the company's behalf by Ōraka-Aparima Rūnaka Inc.

**Ōraka-Aparima Rūnaka Holdings Limited**  
**Notes to the Financial Statements**  
**For the Year Ended 30 June 2016**

**Changes in Accounting Policies:** There have been no changes in accounting policies. All accounting policies have been applied on a basis consistent with those used in the previous year.

	<u>2016</u>	<u>2015</u>
<b>2. Interest Income</b>		
Westpac	578	8,784
Bank of New Zealand	45,186	54,261
Inland Revenue	-	-
<b>Total Interest Income</b>	<u>45,764</u>	<u>63,045</u>
<b>4. Rental Accommodation</b>		
The company owns a house in Te Anau.		
Rents received were:	<u>11,175</u>	<u>3,160</u>
Property expenses were:		
Power and Fuel	2,282	1,468
Insurance	1,832	1,530
Rates	2,551	2,622
Repairs & Maintenance	2,423	1,630
Depreciation	1,533	1,915
	<u>10,621</u>	<u>9,165</u>
<b>3. Grants Paid For:</b>		
Education and Training	-	500
Kapa Haka	-	5,000
Waka Ama	-	5,000
	-	10,500
Payment to Te Rūnaka	-	10,500
	-	<u>21,000</u>
<b>5. Non-Current Receivables</b>		
Wild Kiwi Limited	-	8,270
<b>Total Non-Current Receivables</b>	-	<u>8,270</u>

The Wild Kiwi Limited loan represented a 50% interest in Wild Kiwi Limited. The company was wound up during the 2016 year and \$2,092 has been written off.

**Ōraka-Aparima Rūnaka Holdings Limited**  
**Notes to the Financial Statements**  
**For the Year Ended 30 June 2016**

	2016	<u>2015</u>
<b>6. Bank Deposits</b>		
Bank of New Zealand		
Deposit maturing 25/8/2015 at 4.5%		1,378,100
Deposit maturing 9/8/2016 at 3.55%	1,368,645	-
These deposit amounts include interest accrued to 30 June		
	<u>1,368,645</u>	<u>1,378,100</u>
<b>7. Property, Plant &amp; Equipment</b>		
Property - 7 Cleddau Street, Te Anau		
At Cost	<u>188,044</u>	<u>188,044</u>
Plant & Equipment		
At Cost	16,885	16,885
Less Accumulated Depreciation	<u>10,753</u>	<u>9,220</u>
	6,132	7,665
	<u>194,176</u>	<u>195,709</u>

On 1 July 2016 the Te Anau property was sold to Ōraka-Aparima Rūnaka Incorporated for \$250,000

<b>8. Capital</b>		
Issued and paid in Capital	-	-
<b>Total Issued and Paid in Capital</b>	-	-

100 shares issued at nil value.  
 All shares have equal voting rights.

**Ōraka-Aparima Rūnaka Holdings Limited**  
**Supplementary Schedule - Fixed Assets and Depreciation**  
**For the Year Ended 30 June 2016**

	Dep Rate	Start of Year 01/07/2015			Additions		End of Year 30/06/2016		
		Cost	Accumulated Depreciation	Book Value			Depreciation	Accumulated Depreciation	Book Value
<b>Property:</b>									
Residential Land and Dwelling:									
7 Cleddau St, Te Anau		188,044		188,044					188,044
<b>Plant &amp; Equipment:</b>									
Furniture - Cleddau St	20	13,434	7,356	6,078		1,216	8,572	4,862	
Kitchen Items- Cleddau St	20	2,053	1,436	617		123	1,559	494	
Washing Machine & Lux	20	1,398	428	970		194	622	776	
<b>Sub-Total</b>		16,885	9,220	7,665		1,533	10,753	6,132	
<b>Total</b>		204,929	9,220	195,709		1,533	10,753	194,176	



# Janet C. Horrell

## Chartered Accountant

### AUDIT REPORT TO THE SHAREHOLDER OF ORAKA – APARIMA RUNAKA HOLDINGS LIMITED

I have audited the financial statements of Oraka Aparima Runaka Holdings Limited on pages 3 to 8. They comprise the Statement of Financial Position as at 30 June 2016, the Statement of Financial Performance, the Statement of Movement in Equity for the year ended 30 June 2016 and Notes to the Financial Statements containing explanatory information.

#### **DIRECTOR'S RESPONSIBILITIES**

The directors are responsible for the preparation of financial statements in accordance with generally accepted accounting practice in New Zealand that give a true and fair view of the matters to which they relate. This includes the design, implementation and maintenance of internal control relevant to the preparation of financial statements that are free from material misstatement, whether due to fraud or error.

#### **AUDITOR'S RESPONSIBILITIES**

It is my responsibility to express an independent opinion on the financial statements based on my audit.

#### **BASIS OF OPINION**

An audit includes examining, on a test basis, evidence relevant to the amounts and disclosures in the financial statements.

It also includes assessing:

- the significant estimates and judgements made by the directors in the preparation of the financial statements, and
- whether the accounting policies are appropriate to the Oraka Aparima Runaka Holding Limited's circumstances and consistently applied and adequately disclosed.

I conducted my audit in accordance with New Zealand Auditing Standards and have carried out such procedures as I considered necessary in order to provide me with sufficient evidence to give a reasonable assurance that the financial statements are free from material misstatements, whether caused by fraud or error. In forming my opinion I also evaluated the overall adequacy of the presentation of information in the financial statements.

#### **QUALIFIED OPINION**

In common with other organisations of a similar nature, control over some income prior to its being recorded is limited, and there are no practical audit procedures to determine the effect of this limited control. Subject to this in my opinion:

- proper accounting records have been kept by Oraka-Aparima Runaka Holdings Limited as far as appears from the examination of these records, and
- the financial statements comply with generally accepted accounting practice.

In my opinion the Financial Statements for Oraka-Aparima Runaka Holdings Limited give a true and fair view of its financial position as at 30 June 2016 and the result of its operations for the year ended on that date.

My audit was completed on 23 August 2016 and my qualified opinion is expressed as at that date.

J C HORRELL CA  
AUDITOR - WINTON

Ryan Road, Oreti RD 3 Winton 9783  
Telephone: (03) 2368720 or Fax: (03) 2368711  
Email: janet.horrell@velocitynet.co.nz